

[ARC 60104]

ADVANCED ARCHITECTURAL CONSTRUCTION

PROJECT 1 – MULTIDISCIPLINARY COLLABORATIVE PROJECT



TRUFFLES · GASTRONOMY HAVEN

Belly Wong	0356764
Kimiko Yong Yi Xuan	0359628
William Limmanjaya	0364193
Nicolaus Putra Tanjaya	0360735
Chee Kuan Yung	0356997

Tutor: Ts. Ahmad Fahmi Zainazlan

TABLE OF CONTENTS

1.0 CONTENTS

1.1 TASK DELEGATIONS

2.0 DESIGN CONCEPT / NARRATIVE

- CONCEPT
- CASE AND PRECEDENT STUDY

3.0 AI GENERATED IMAGES AND PROMPTS

4.0 SCHEMATIC PROCESSES

- AI EXTRACTION
- SKETCHES

5.0 GENERAL ASSEMBLY

- 5.1 SITE PLAN & ROOF PLAN
- 5.2 GROUND & MEZZANINE FLOOR PLAN
- 5.3 ELEVATIONS
- 5.4 SECTIONS
- 5.5 3D PERSPECTIVES

6.0 BIM MODEL

7.0 DESIGN CONSTRUCTABILITY

- CONSTRUCTION DETAILS

8.0 SCHEDULES

- 8.1 ROOM SCHEDULE
- 8.2 FINISHES AND MATERIALS SCHEDULE
- 8.3 DOOR SCHEDULE
- 8.4 WINDOW SCHEDULE

9.0 REQUEST OF INFORMATION

- PROGRESSIVE FORM

10.0 QS COST ESTIMATION

- COST ESTIMATION

11.0 SUMMARY AND REFERENCES

- 11.1 TEAM MEMBERS SUMMARY & REFLECTIONS
- 11.2 REFERENCE

1.1 TASK DELEGATIONS

Tasks Descripton	Assigned To	Deadline	Remarks
AI Prompts and generated Images	All	24 April	Generated 11 types of images from Gemini, Dall-E, ChatGPT and getimg.ai
Sketch Floor Plans and Elevations	Nicolaus & Kimiko	29 April	Designing the spatial layout, the overall spaces and the shape of the building
Roof Details	Kuan Yung	29 April	Research on timber and steel roof details construction
Sectional Joints	William	29 April	Research on wall and ceiling sectional joints
Materiality	Belly	29 April	Research on the materials for both interior and exterior of the building
Finalized Floor Plans and Elevations	Nicolaus & Kimiko & Belly	4 May	Come out with detailed floor plans, indicating staircase, detailed elevations
BIM Model	Nicolaus	10 May	Designing our ideas on revit
Structural & Roof Details	William & Kuan Yung	13 May	Putting structural construction into BIM Model
Finishes & Furnitures	Belly & Kimiko	14 May	Putting furnitures into BIM Model and finishes according to the materials

Tucked in the heart of **Putrajaya**, **Truffles** is a hidden retreat where **golden light** softens **walnut panelling** and **brushed metal**. Inside, **rich tones**, and the scent of **earth** and **spice** create an atmosphere that's both **intimate** and **grand**.

Soft jazz drifts from above as you're guided past **polished porcelain stoneware**. Each dish — from **rare truffles** to **aged wagyu** — is plated with **quiet artistry**, unfolding with **depth** and **precision**.

With **seamless service**, **refined cocktails**, and **curated details** at every turn, dining at **Truffles** feels less like a **meal** and more like an **elegant escape**.



Putrajaya, Malaysia

Gastronomy Haven

2.0 PRECEDENT STUDY



Metal Accents: Use brushed or polished metal for columns, beams, and decorative elements to add a touch of sophistication.



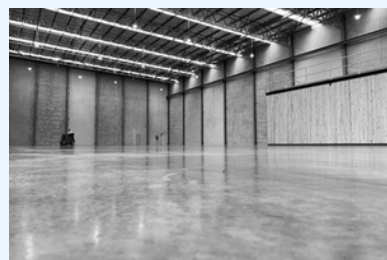
Minimalist Lighting Fixtures: Opt for sleek, metal-framed lighting to complement the industrial materials.



Neutral Color Palette: Stick to a palette of grays, blacks, and metallics to maintain a cohesive and upscale look.



Glass Partitions and Facades: Incorporate large glass panels or partitions to create a sense of openness and allow natural light to permeate the space.



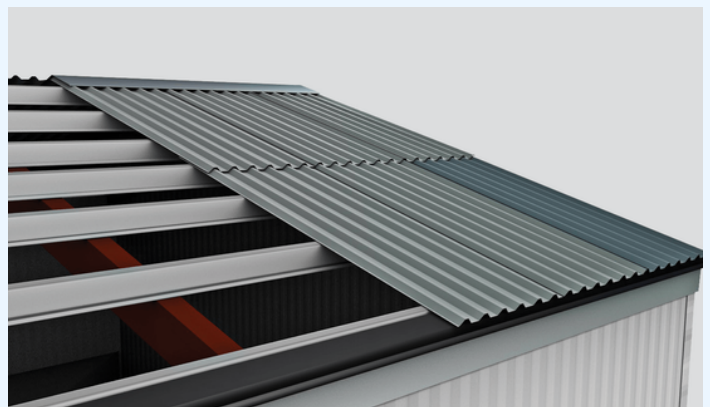
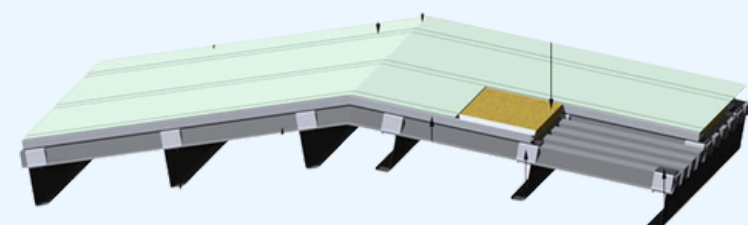
Exposed Concrete Surfaces: Utilize polished or board-formed concrete for walls and ceilings to add texture and a modern industrial feel.



Brick

- Finishes:** Choose smooth-face, wire-cut, or glazed bricks in tones like charcoal, mocha, pale terracotta, or whitewashed.
- Patterns:** Use refined layouts like herringbone, stack bond, or basket weave for visual interest.
- Applications:**
 - Exterior:** Façade accents, planters, outdoor walls.
 - Interior:** Feature walls, arches, columns, or decorative screens.
- Lighting:** Pair with warm, indirect lighting to highlight texture and depth.
- Balance:** Use as an accent alongside wood, glass, or metal to maintain a modern-luxury feel.

ROOF



3.0 AI IMAGE PROGRESSIVE

FIRST AI IMAGE



SECOND AI IMAGE



THIRD AI IMAGE



FINAL AI IMAGE



AI PROMPT

Design a refined fine dining restaurant named Thymes, located in Putrajaya, covering 2500m². The structure is a single-story building with thoughtfully designed 'pop-out' architectural features that bring a soft, organic contrast — hinting at a second-level botanical terrace or elevated garden space.

The exterior should feel serene and grounded, using natural materials like stone, wood, and glass. Incorporate vertical herb gardens, soft ambient lighting, and clean lines to reflect a sophisticated, nature-rooted identity.

For the interior, envision a sanctuary of herbal elegance and botanical artistry. Use a muted, earthy palette — sage greens, warm neutrals, soft wood tones, and organic textures. The design should blend natural light with crafted, intimate lighting.

Feature herb installations, subtle botanical patterns, and minimalist yet warm décor. Each space should feel like a culinary greenhouse — where classic cuisine is reborn through the quiet magic of curated herbs. The atmosphere is both calming and cerebral, turning every meal into a ritual of refined natural indulgence.

Could you generate me an interior render of a fine dining restaurant that is built on a plot of land around 2500 square meters in area.

The following text is a description of the restaurant named "Tarragon"

Where French finesse meets culinary daring, Tarragon is a celebration of timeless elegance and bold Flavors.

Known for its aromatic sophistication, this fine dining gem marries classic techniques with modern flair. Each course is a dance of layered nuance subtle, seductive, and irresistibly refined designed to leave a lasting impression on both palate and memory.

Could you generate me an interior render of a fine dining restaurant that is built on a plot of land around 2500 square meters in area.

The following text is a description of the restaurant named "Truffles"

The epitome of indulgent elegance, Truffles is a celebration of rarity, richness, and refined taste. Each creation pays homage to the world's most treasured ingredients, presented with opulence and grace. With an atmosphere as luxurious as its name suggests, Truffles invites guests to Savor decadence with every bite—a true temple of gourmet splendor.

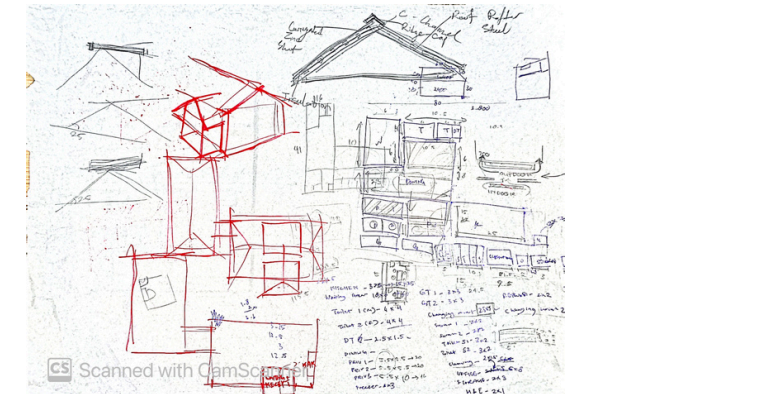
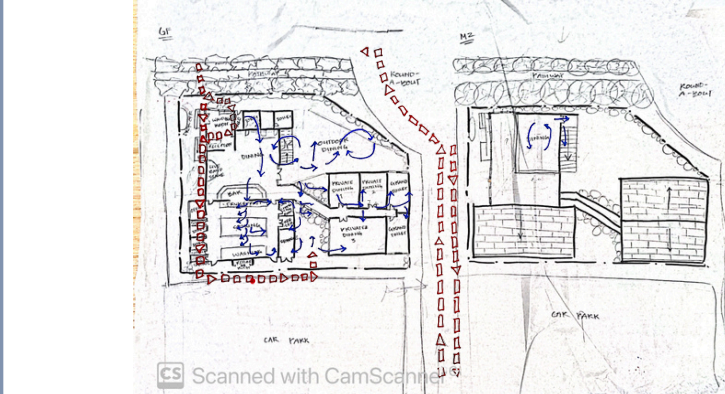
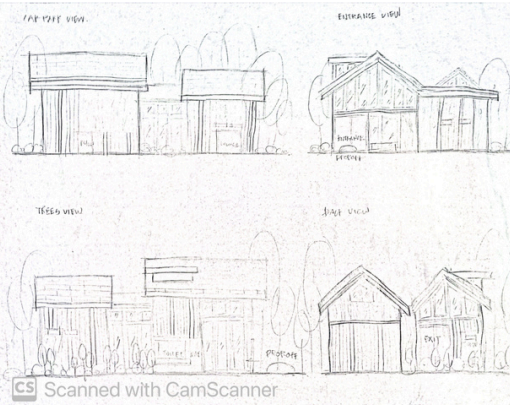
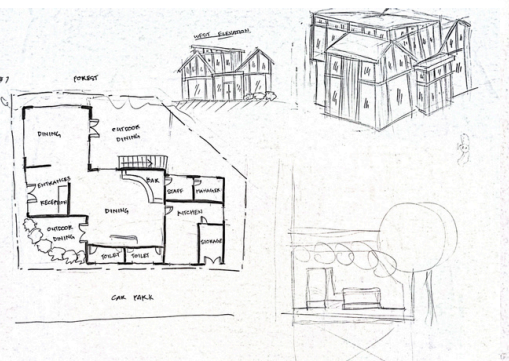
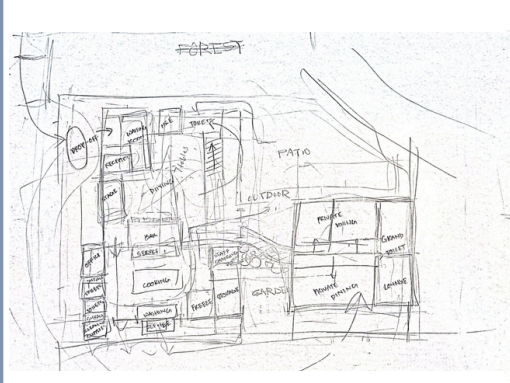
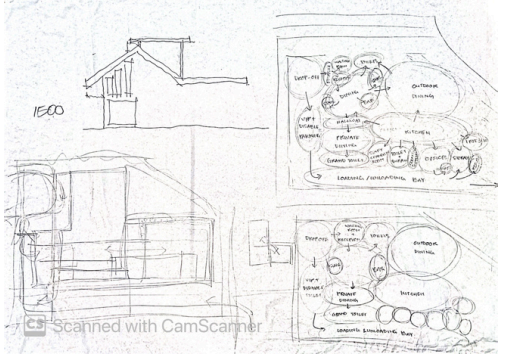
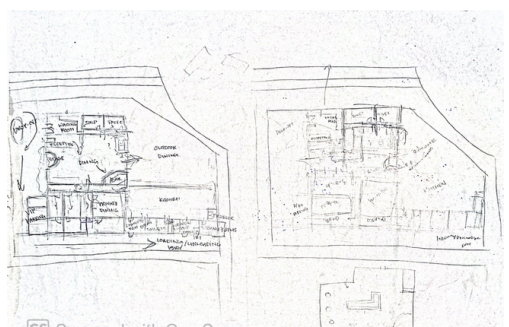
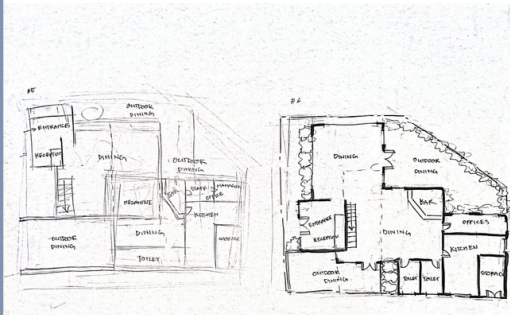
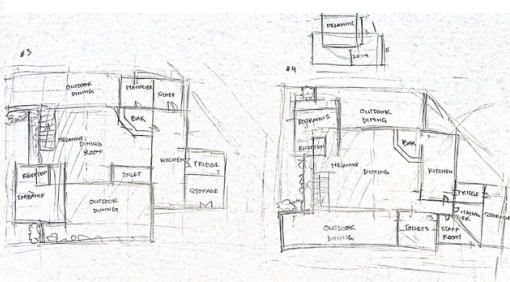
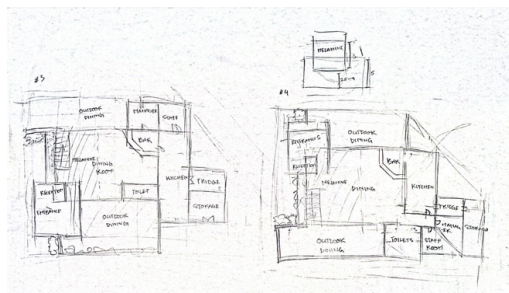
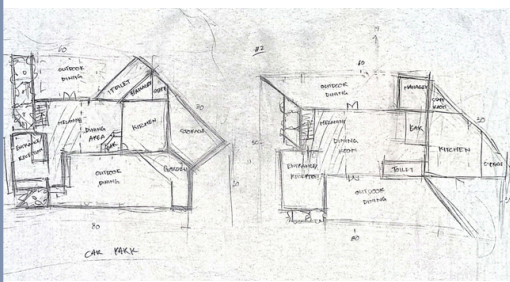
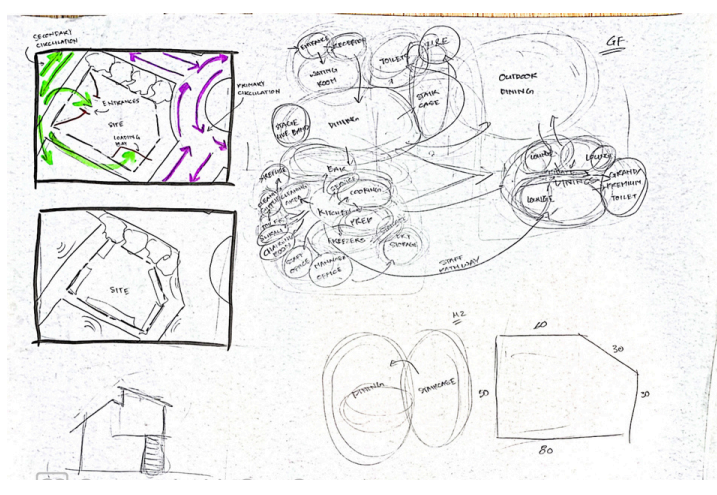
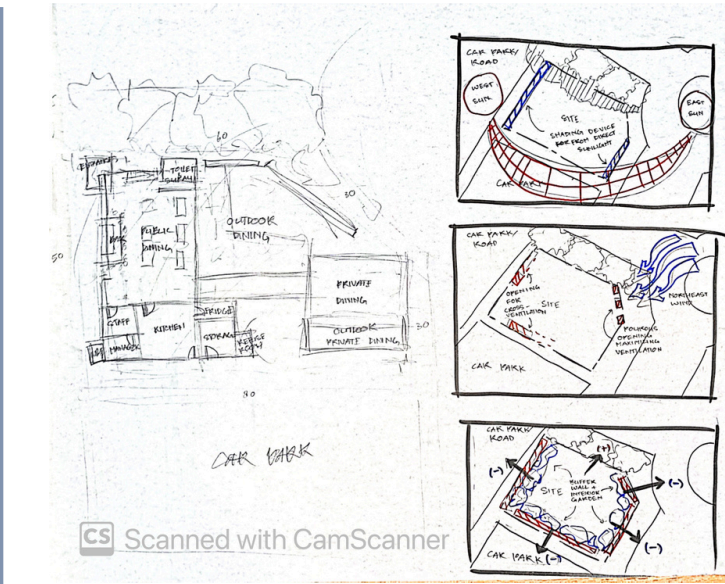
Try including elements that relate to truffles from the color, texture or other qualities

Design a fine dining restaurant named Truffles, located in Putrajaya with a sprawling 2500m² footprint. The architecture is primarily single-story, enhanced by elegant 'pop-out' features that hint at a subtle second-story elevation — adding a layer of exclusivity and visual richness.

The exterior should radiate indulgent elegance, with rich materials like dark stone, brushed metals, and warm ambient lighting. The design should feel rare, refined, and quietly grand — a modern palace of taste.

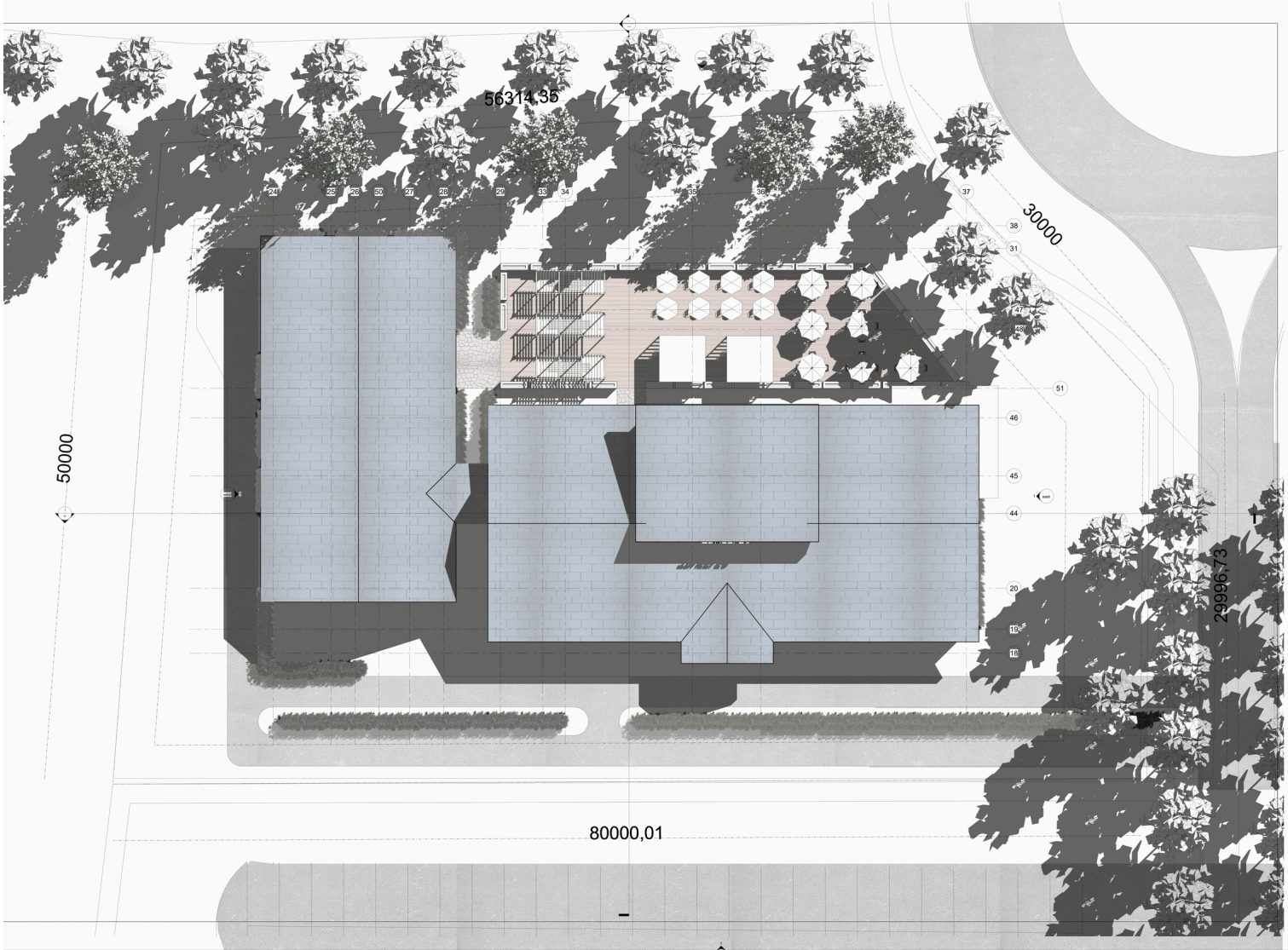
For the interior, envision a celebration of gourmet luxury. Think plush velvet seating, dramatic lighting, polished marble surfaces, and golden accents. The color palette should include deep tones like obsidian, truffle brown, and antique gold.

Every element — from the curated art to the glassware — should pay homage to the world's most treasured ingredients and culinary traditions. The space should evoke richness, grace, and a sense of sacred indulgence — a true temple of fine dining where every detail whispers opulence."

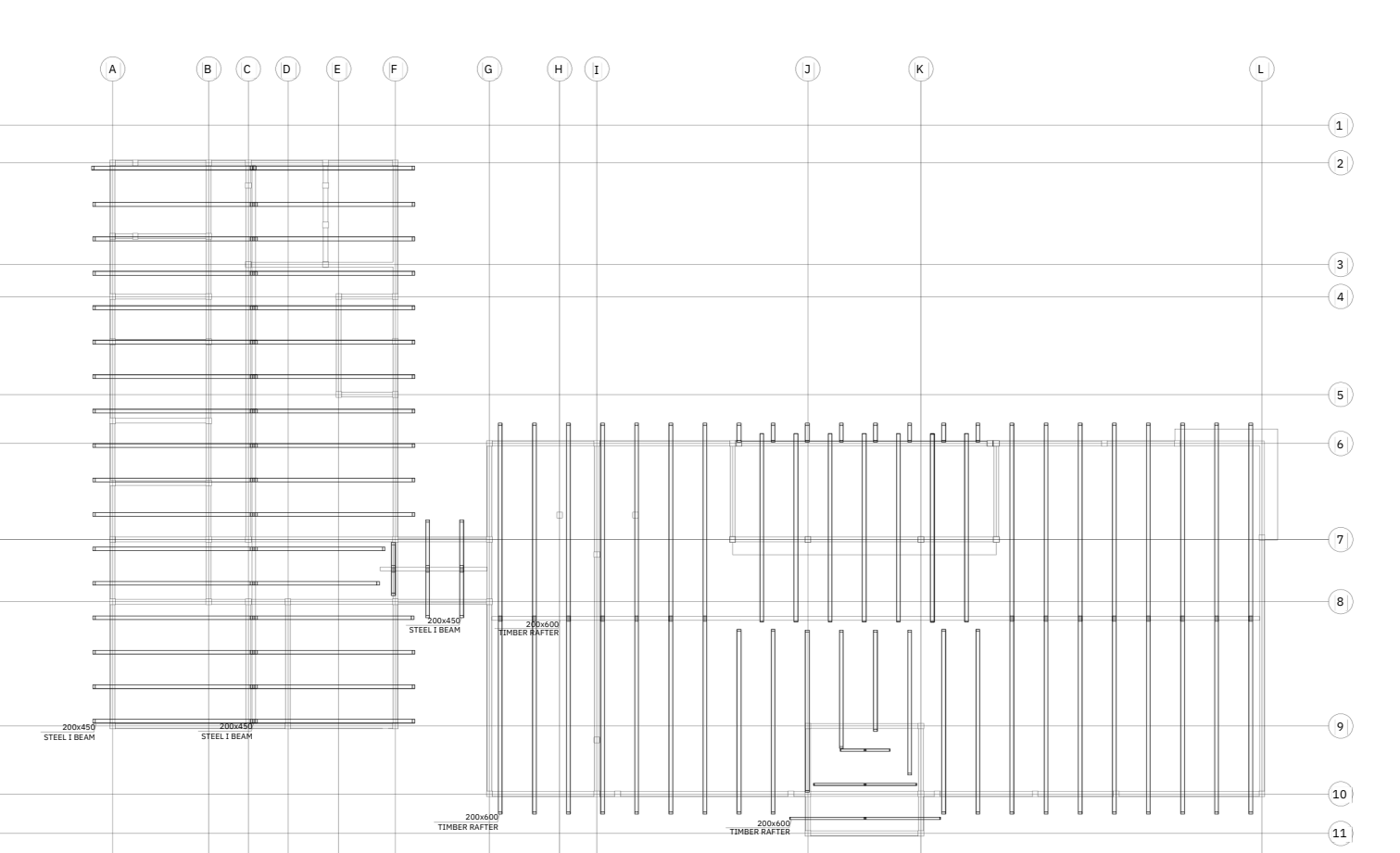


5.0 GENERAL ASSEMBLY

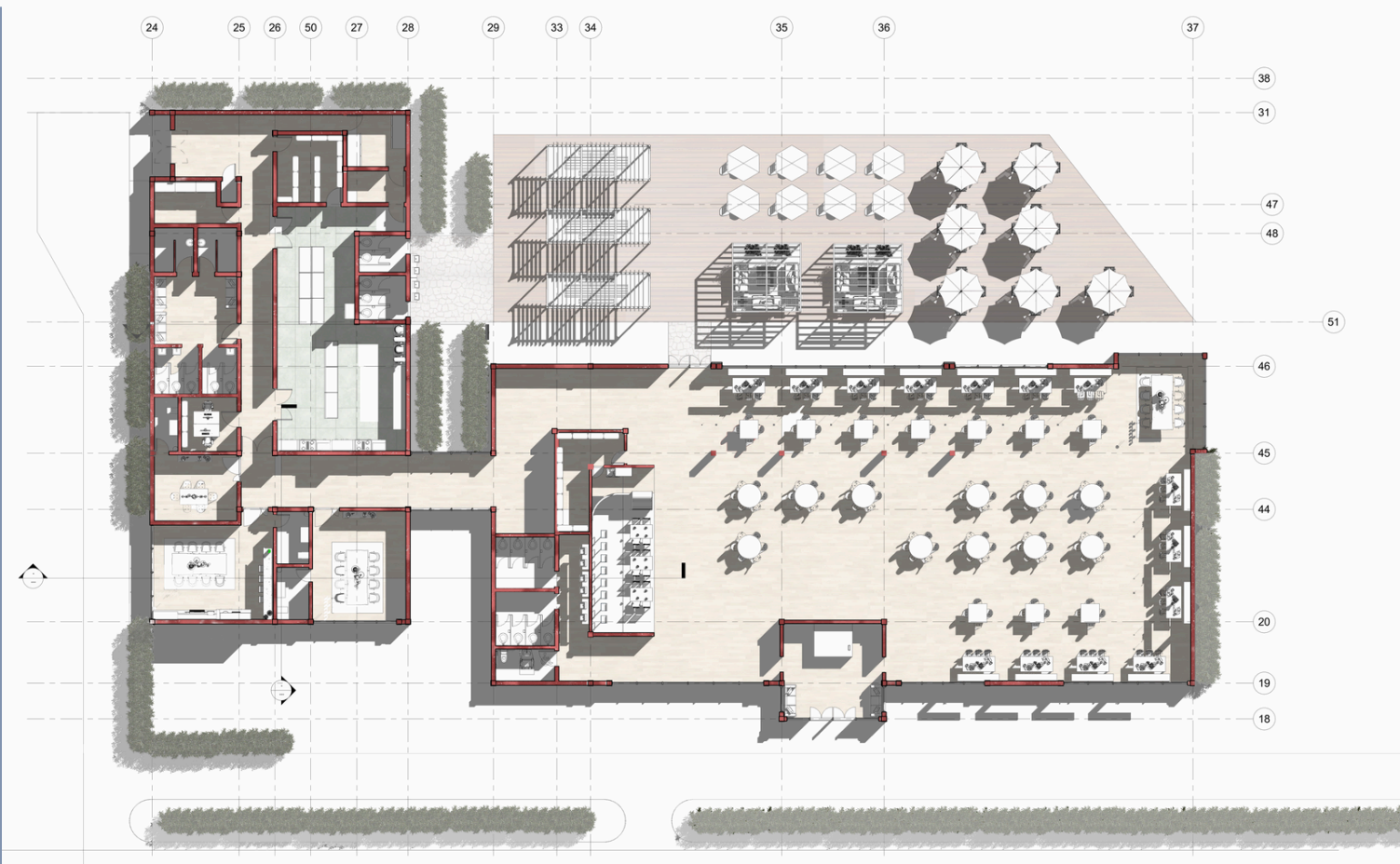
SITE PLAN



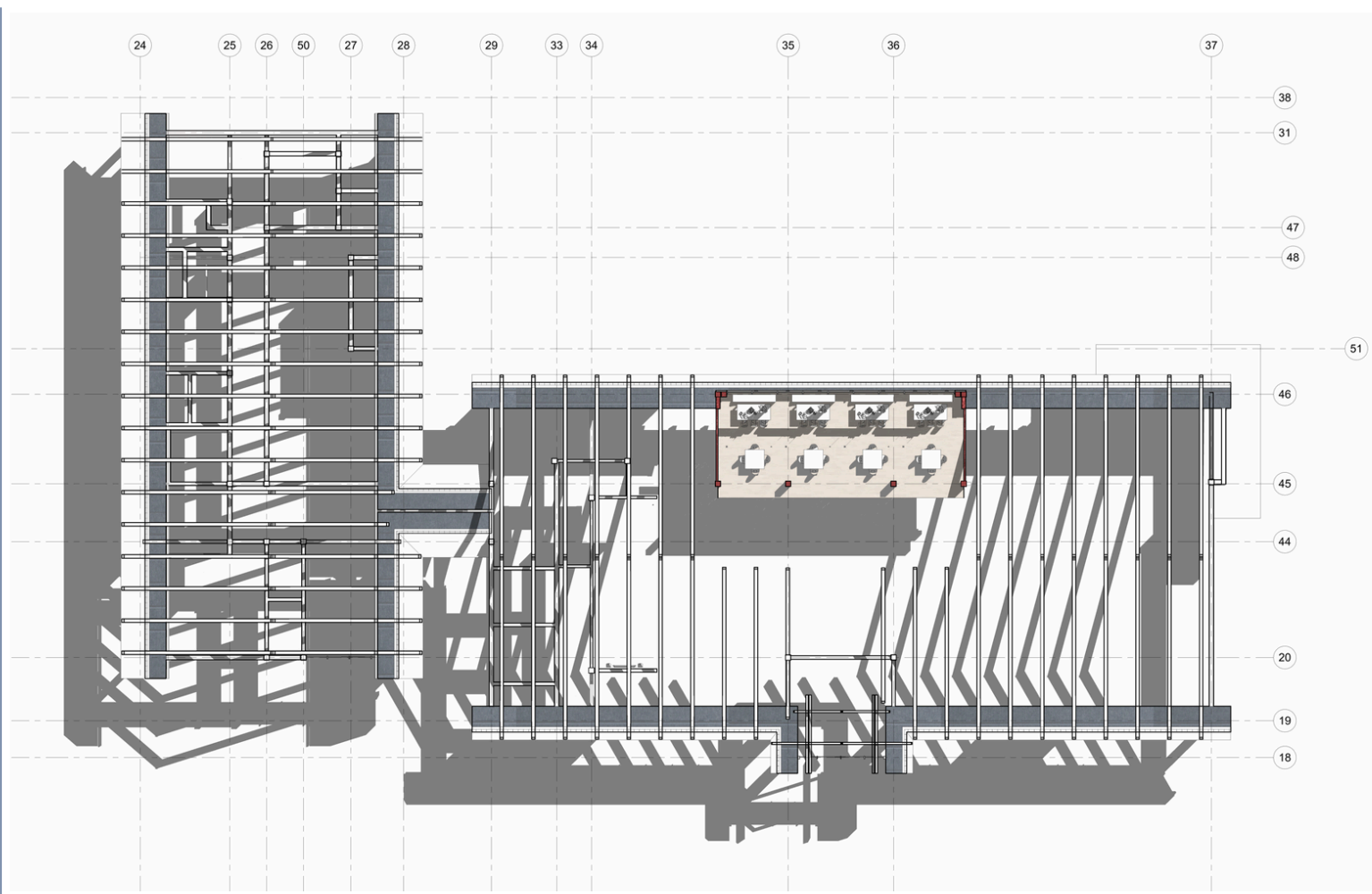
ROOF PLAN



GROUND FLOOR PLAN



MEZZANINE FLOOR PLAN



EAST ELEVATION



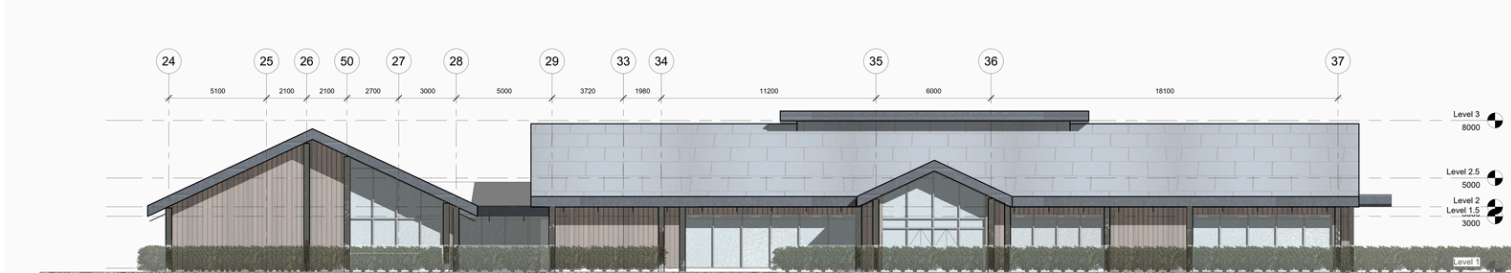
NORTH ELEVATION



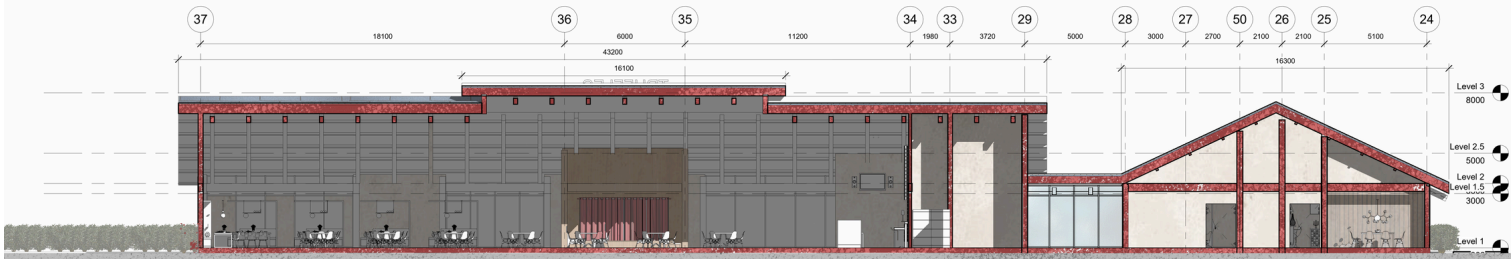
WEST ELEVATION



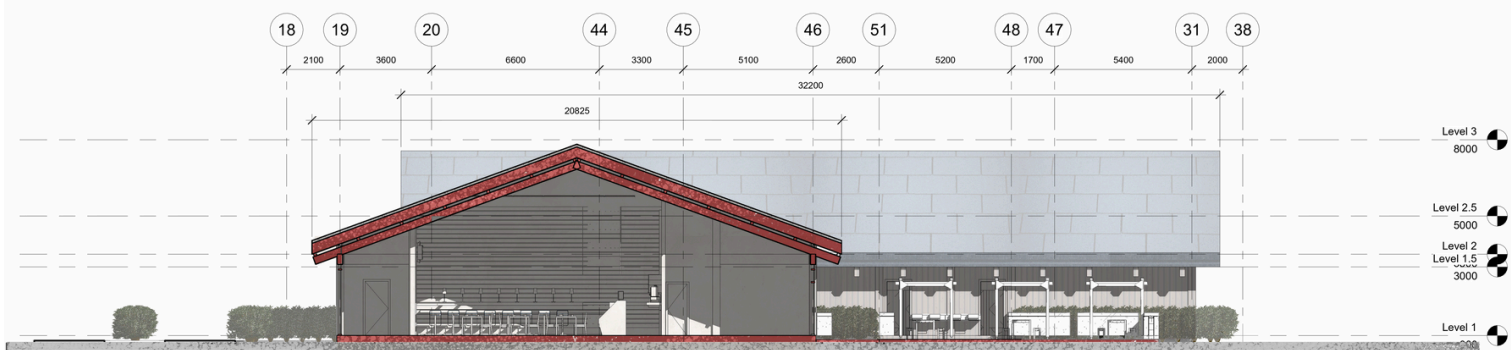
SOUTH ELEVATION



SECTION A-A'



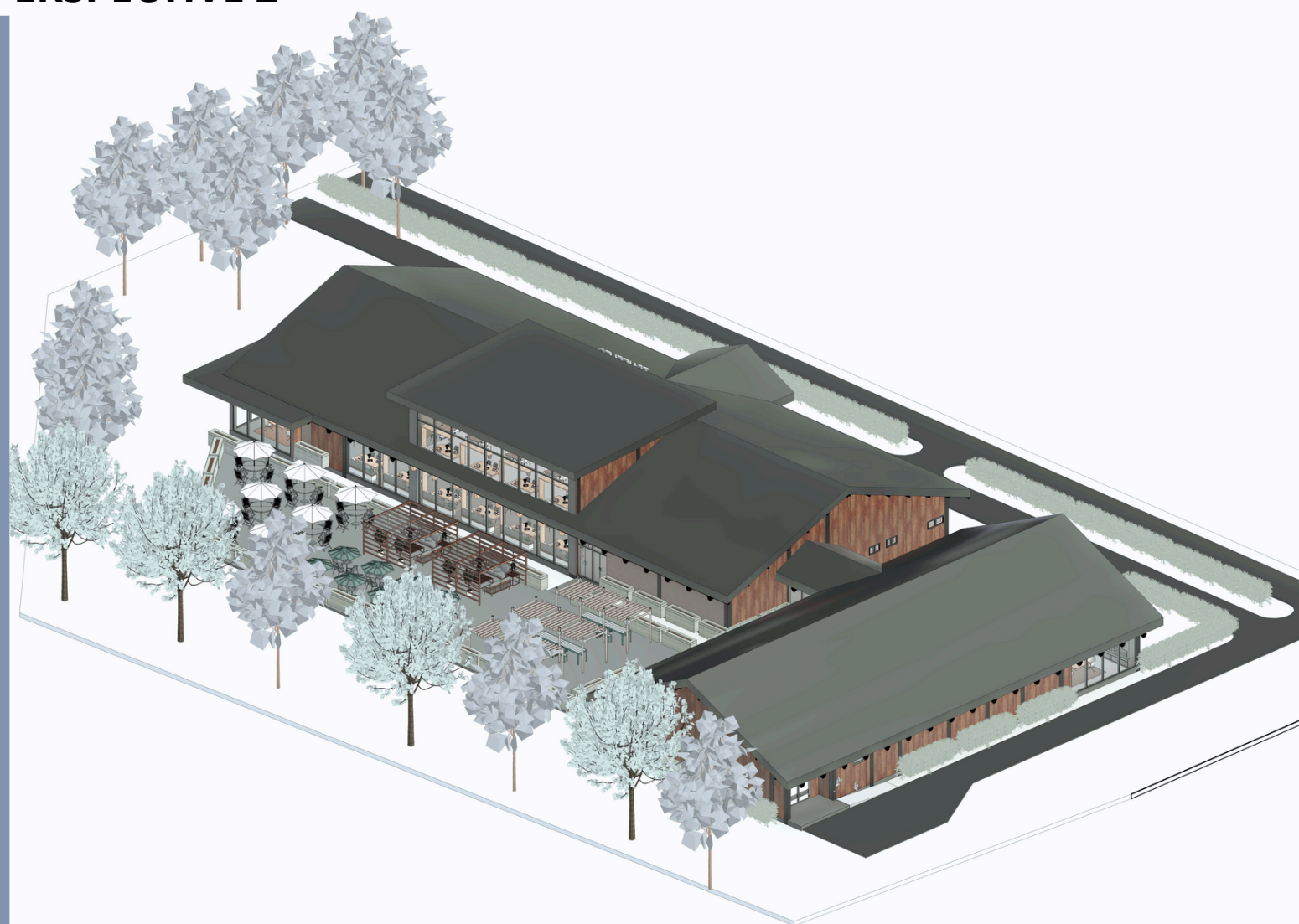
SECTION A-A'



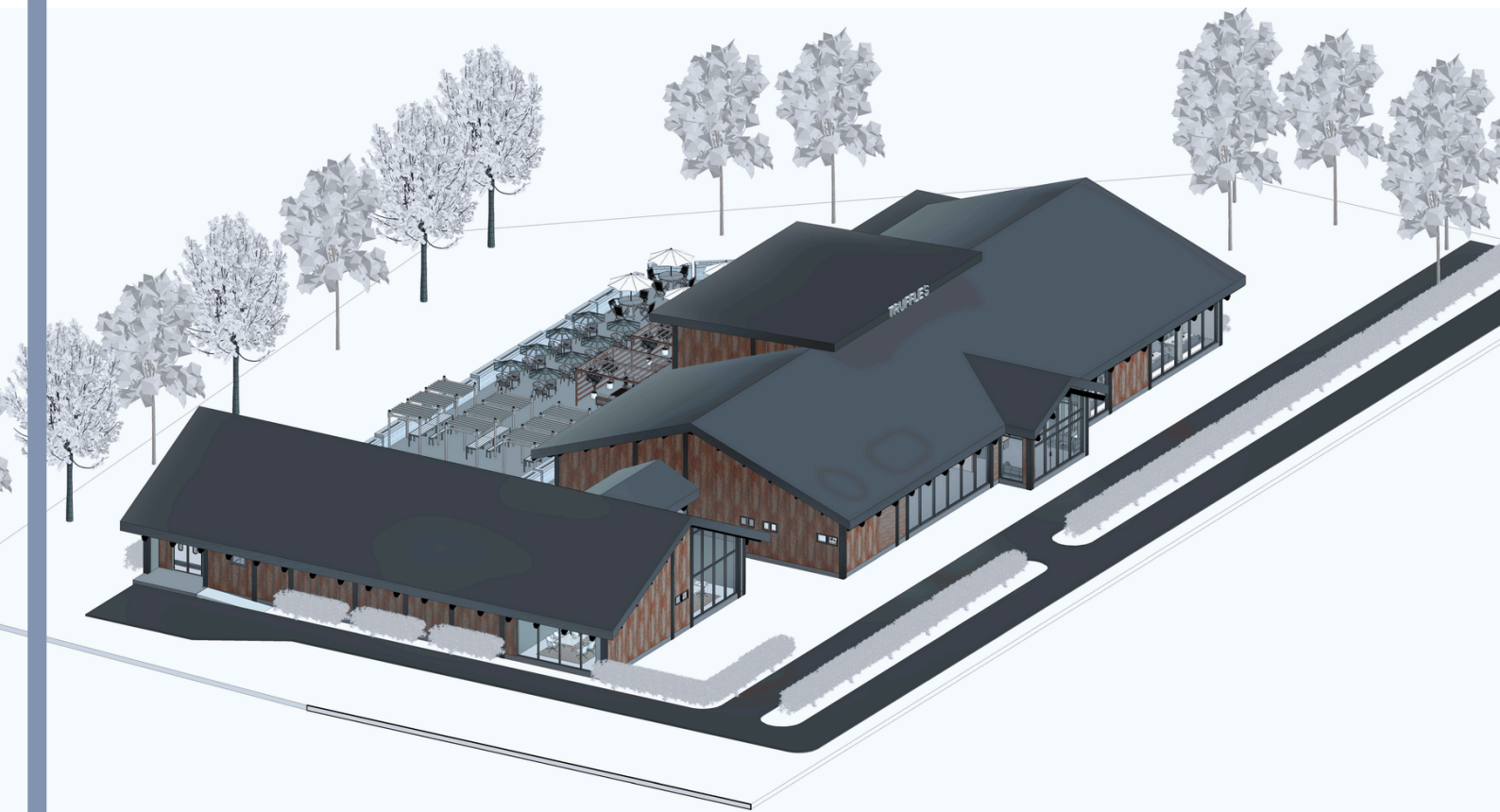
PERSPECTIVE 1



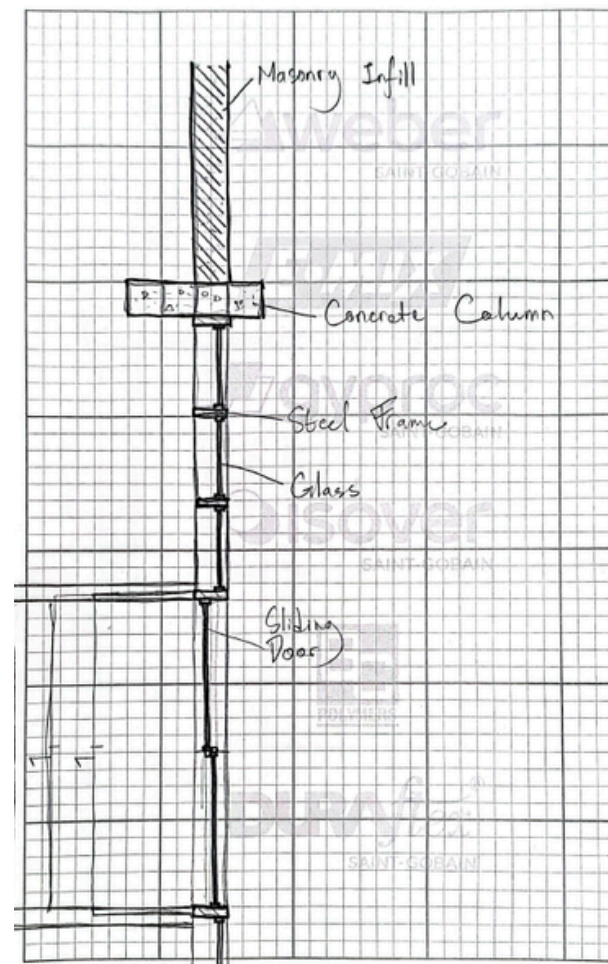
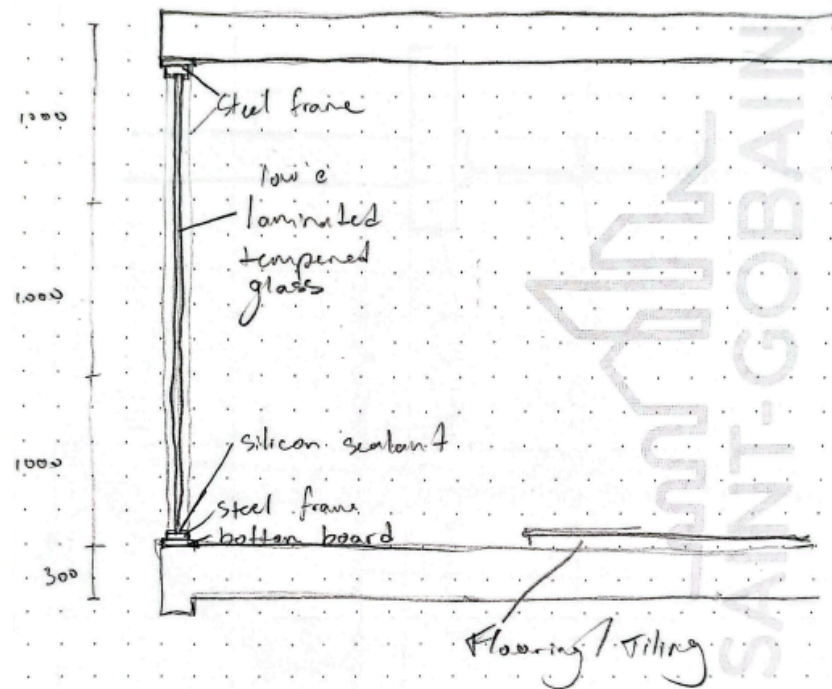
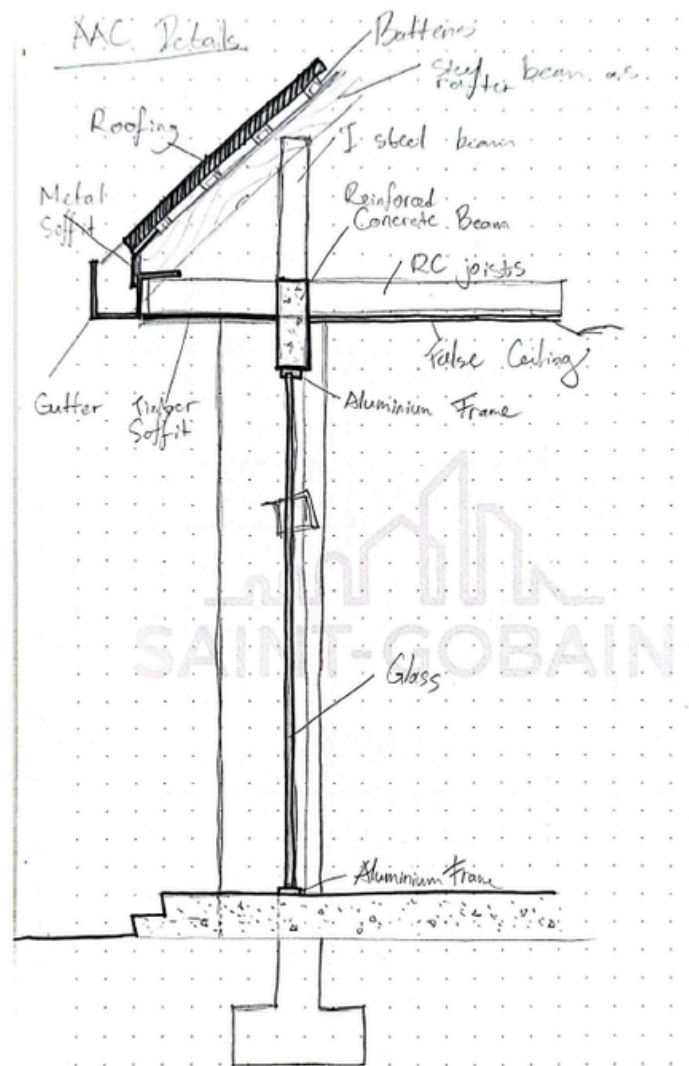
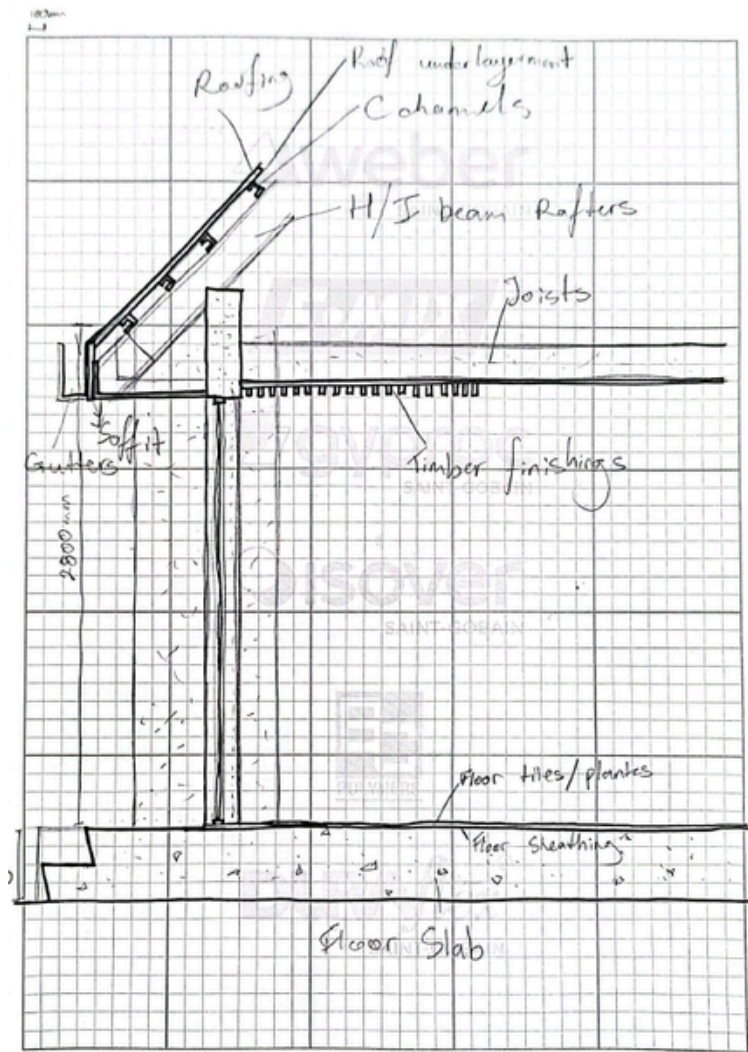
PERSPECTIVE 2

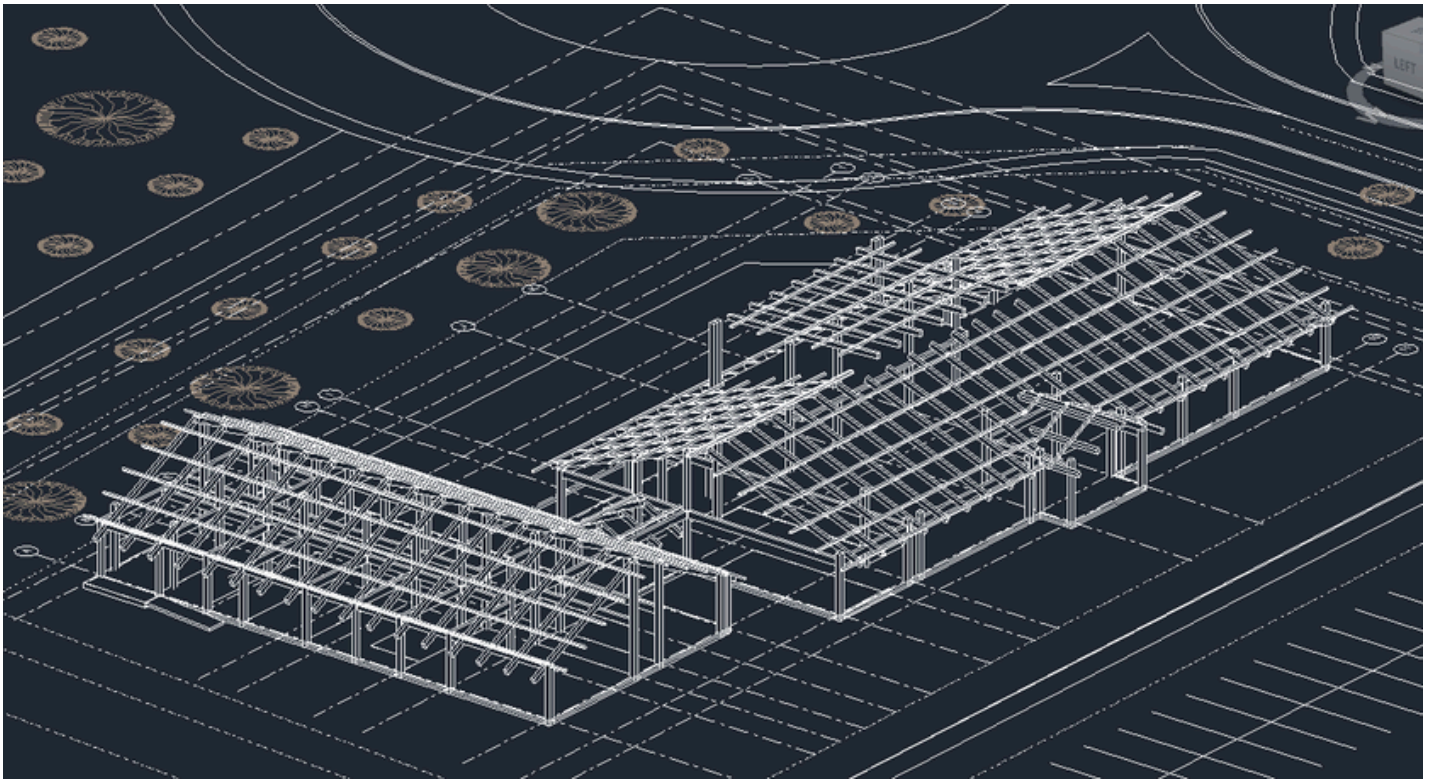


6.0 BIM MODELS



7.0 DESIGN CONSTRUCTIBILITY DETAIL SKETCHES





FLOOR TO CEILING DETAIL

Corrugated Zinc Roofing Sheets
2400mm x 900mm

Square Hollow Sections
50mm x 50mm

Gypsum Boards
2400mm x 1200mm

Rock Wool Insulation

Rectangular Hollow Sections
50mm x 100mm

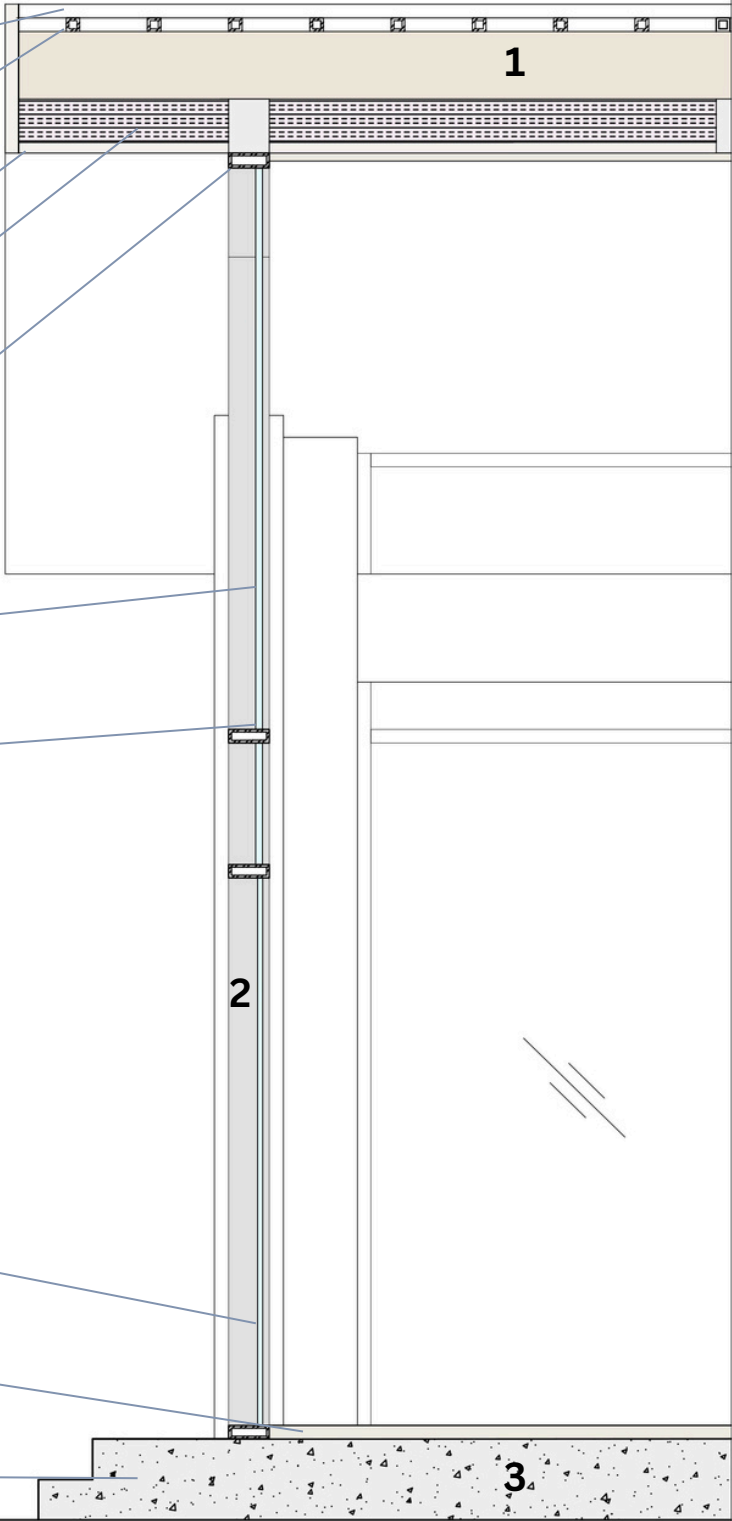
Low-e Tempered Glass
Custom fit to frame

Aluminium Window Frame
30mm x 20mm

Double Glass Door
1800mm x 2100mm

Porcelain Flooring Tiles
600mm x 600mm

RC Floor Slab
300mm thick



- 1. Roof System
- 2. Curtain Wall
- 3. Floor System

8.1 ROOM SCHEDULE

Area	Room
1 m²	M&E Room
4 m²	Grand Toilet 1
6 m²	Grand Toilet 2
6 m²	Grand Toilet 3
6 m²	Walk-in Cooler
6 m²	F.Staff W/C
6 m²	M.Surau
6 m²	F.Surau
6 m²	Outdoor M.Toilet
7 m²	Outdoor F.Toilet
7 m²	Disabled Restroom
7 m²	M.Staff W/C
10 m²	Manager's Office
10 m²	Refuse Room
10 m²	Male Restroom

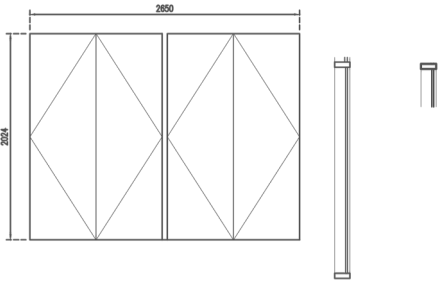
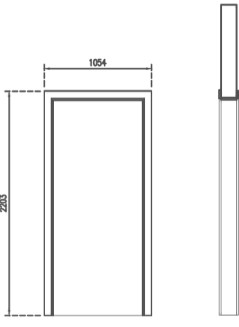
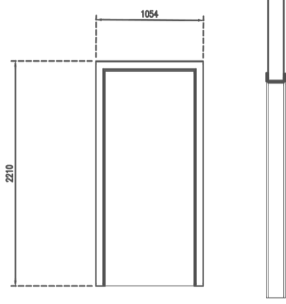
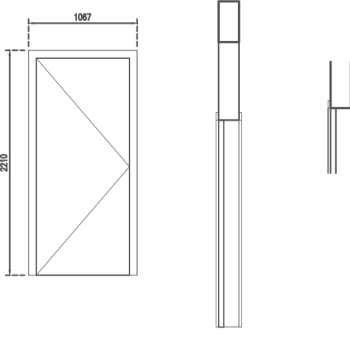
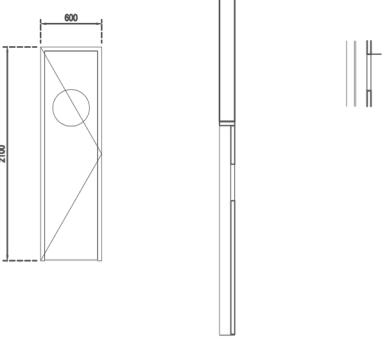
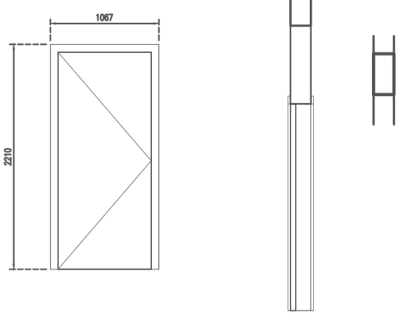
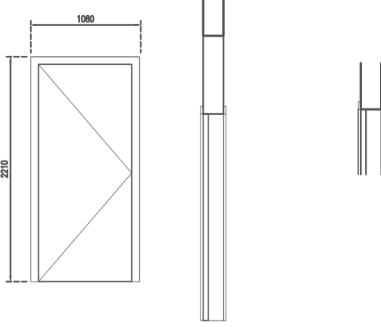
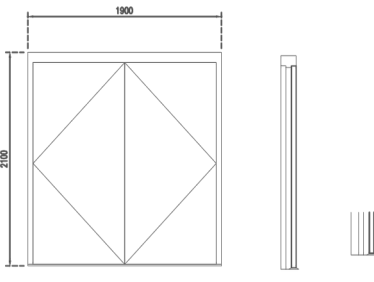
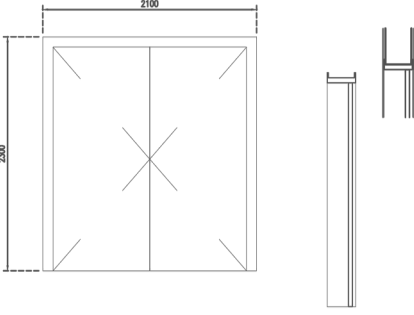
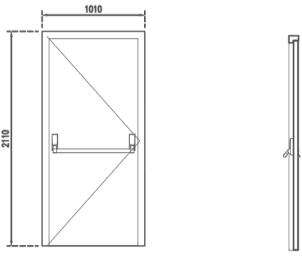
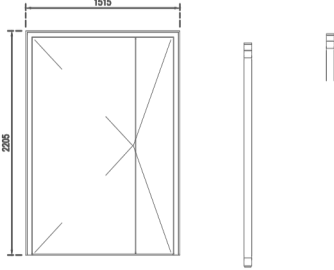
Area	Room
11 m²	Walk-In Fridge
11 m²	Front Storage Area
11 m²	Female Restroom
15 m²	Back Storage Area
19 m²	Staff Room
19 m²	Private Dining 1
29 m²	Bar
33 m²	Reception Area
36 m²	Private Dining 2
36 m²	Cold Kitchen
41 m²	Private Dining 3
55 m²	Service Hallway
56 m²	Hot Kitchen
84m²	Mezzanine
88 m²	Connecting Hallway
609 m²	Dining Area

Grand total: 1251m²

8.2 FINISHES AND MATERIALS SCHEDULE

Block	Room Name	Floor Finish	Skirting	Wall Finish	
FRONT OF HOUSE	Reception Area	- 600 x 600 mm Polished porcelain tiles	- 300 x 100mm ht. ceramic tiles.	-10mm. thk, 600 x 2400mm Coated timber veneer panels	-
	Dining Area	- 600 x 600 mm Polished porcelain tiles	- 300 x 100mm ht. ceramic tiles.	- 4mm. thk. Skim Coat and Emulsion Paint, 10mm. thk, 600 x 2400mm Coated timber veneer panels	-
	Front Storage Area	- 4mm. thk, 1220 x 180mm Vinyl Planks	-	- 4mm. thk. Skim Coat and Emulsion Paint	-
	Bar	- 600 x 600 mm Polished porcelain tiles	-	- 4mm. thk. Skim Coat and Emulsion Paint	-
	Disabled Restroom	- 300 x 300mm Non-slip ceramic tiles with water proofing.	-	- 600 x 1200mm Glazed ceramic tiles	-
	Female Restroom	- 300 x 300mm Non-slip ceramic tiles with water proofing.	-	- 600 x 1200mm Glazed ceramic tiles	-
	Male Restroom	- 300 x 300mm Non-slip ceramic tiles with water proofing.	-	- 600 x 1200mm Glazed ceramic tiles	-
	Mezzanine	- 120 x 1800mm Coated Timber Planks	-	- 4mm. thk. Skim Coat and Emulsion Paint	-
	Spiral Staircase	- Stainless steel nosing, with black anti-slip strip	-	- Paint finished.	-
BACK OF HOUSE	Connecting Hallway	- 600 x 600 mm Polished porcelain tiles	-	- 4mm. thk. Skim Coat and Emulsion Paint, 10mm. thk, 600 x 2400mm Coated timber veneer panels	-
	Private Room 1	- 120 x 1800mm Coated Timber Planks	- 300 x 100mm ht. ceramic tiles.	- 4mm. thk. Skim Coat and Emulsion Paint, 200 x 2800mm WPC slatted wood panels	-
	Private Room 2	- 120 x 1800mm Coated Timber Planks	- 300 x 100mm ht. ceramic tiles.	- 4mm. thk. Skim Coat and Emulsion Paint, 200 x 2800mm WPC slatted wood panels	-
	Private Room 3	- 120 x 1800mm Coated Timber Planks	- 300 x 100mm ht. ceramic tiles.	- 4mm. thk. Skim Coat and Emulsion Paint, 200 x 2800mm WPC slatted wood panels	-
	Grand Toilet 1	- 300 x 300mm Non-slip ceramic tiles with water proofing.	-	- 600 x 1200mm Glazed ceramic tiles	-
	Grand Toilet 2	- 300 x 300mm Non-slip ceramic tiles with water proofing.	-	- 600 x 1200mm Glazed ceramic tiles	-
	Grand Toilet 3	- 300 x 300mm Non-slip ceramic tiles with water proofing.	-	- 600 x 1200mm Glazed ceramic tiles	-
	Management Office	- 4mm. thk, 1220 x 180mm Vinyl Planks	-	- 4mm. thk. Skim Coat and Emulsion Paint	-
	Staff Room	- 4mm. thk, 1220 x 180mm Vinyl Planks	-	- 4mm. thk. Skim Coat and Emulsion Paint	-
	W. Staff W/C	- 300 x 300mm Non-slip ceramic tiles with water proofing.	-	- 600 x 1200mm Glazed ceramic tiles	-
	M. Staff W/C	- 300 x 300mm Non-slip ceramic tiles with water proofing.	-	- 600 x 1200mm Glazed ceramic tiles	-
	F. Surau	- 4mm. thk, 1220 x 180mm Vinyl Planks	-	- 4mm. thk. Skim Coat and Emulsion Paint	-
	M. Surau	- 4mm. thk, 1220 x 180mm Vinyl Planks	-	- 4mm. thk. Skim Coat and Emulsion Paint	-
	Walk-in Fridge	- 600 x 600mm Non-slip ceramic tiles with water proofing.	-	- 1mm. thk. Stainless steel panels	-
	Walk-in Cooler	- 600 x 600mm Non-slip ceramic tiles with water proofing.	-	- 1mm. thk. Stainless steel panels	-
	Cold Kitchen	- 600 x 600mm Non-slip ceramic tiles with water proofing.	-	- 600 x 1200mm Glazed ceramic tiles	-
	Hot Kitchen	- 600 x 1200mm Glazed ceramic tiles with water proofing.	-	- 600 x 1200mm Glazed ceramic tiles	-
	Back Storage Area	- 600 x 1200mm Glazed ceramic tiles with water proofing.	-	- 600 x 1200mm Glazed ceramic tiles	-
	Service Hallway	- 600 x 1200mm Glazed ceramic tiles with water proofing.	-	- Plaster & Paint finished.	-
	M&E Room	- Cement Render	-	- Plaster & Paint finished.	-
	Refuse Room	- 300 x 300mm Non-slip ceramic tiles with water proofing.	-	- 600 x 1200mm Glazed ceramic tiles	-
	Outdoor F. Toilet	- 300 x 300mm Non-slip ceramic tiles with water proofing.	-	- 600 x 1200mm Glazed ceramic tiles	-
	Outdoor M. Toilet	- 300 x 300mm Non-slip ceramic tiles with water proofing.	-	- 600 x 1200mm Glazed ceramic tiles	-
	Exterior Walls	-	-	- 200 x 2800mm WPC slatted wood panels, 1200 x 2700mm Waterproof timber veneers	-
	Pathway	- 100mm Imprinted pattern on cement	-	-	-
	Decking	- 150 x 2900mm WPC decking	-	-	-
	Ramp	- Steel trowelled power float concrete floor hardener with imprinted groove line.	-	-	-

8.3 DOOR SCHEDULE

		
<div>fl. lev.</div>		
<div>DOOR TYPE</div> <div>D1</div> <div>Door Curtain Wall Double Glass</div>	<div>DOOR TYPE</div> <div>D2</div> <div>OPENING CASE</div>	<div>DOOR TYPE</div> <div>D3</div> <div>OPENING CASE</div>
<div>LOCATION</div> <div>RECEPTION</div>	<div>LOCATION</div> <div>RECEPTION/MALE RESTROOM/FEMALE STAFF W/C/MALE STAFF W/C/OUTSIDE M. TOILET/OUTSIDE F. TOILET</div>	<div>LOCATION</div> <div>RECEPTION</div>
<div>SIZE</div> <div>2024 X 2650</div>	<div>SIZE</div> <div>1054 X 2203</div>	<div>SIZE</div> <div>1054 X 2210</div>
<div>HINGES</div> <div>STAINLESS STEEL HINGES</div>		
<div>COUNTS</div> <div>1</div>	<div>COUNTS</div> <div>7</div>	<div>COUNTS</div> <div>1</div>
		
<div>fl. lev.</div>		
<div>DOOR TYPE</div> <div>D4</div> <div>SINGLE FLUSH DOOR</div>	<div>DOOR TYPE</div> <div>D5</div> <div>INTSGL</div>	<div>DOOR TYPE</div> <div>D6</div> <div>SINGLE FLUSH DOOR</div>
<div>LOCATION</div> <div>FRONT STORAGE/GRAND TOILET/STAFF ROOM/F. SURAU/M. SURAU/SERVICE HALLWAY/WALKING FRIDGE WALK IN COOLER/BACK STORAGE 2</div>	<div>LOCATION</div> <div>BAR</div>	<div>LOCATION</div> <div>DISABLED BATHROOM/GRAND TOILET/MAE/WALK IN COOLER</div>
<div>DOOR SIZE</div> <div>914 X 2108</div>	<div>DOOR SIZE</div> <div>600 X 2100</div>	<div>DOOR SIZE</div> <div>1067 X 2210</div>
<div>HINGES</div> <div>STAINLESS STEEL HINGES</div>	<div>HINGES</div> <div>STAINLESS STEEL HINGES</div>	<div>HINGES</div> <div>STAINLESS STEEL HINGES</div>
<div>COUNTS</div> <div>9</div>	<div>COUNTS</div> <div>1</div>	<div>COUNTS</div> <div>4</div>
		
<div>fl. lev.</div>		
<div>DOOR TYPE</div> <div>D7</div> <div>SINGLE FLUSH DOOR</div>	<div>DOOR TYPE</div> <div>D8</div> <div>DOOR EXTERIOR DOUBLE</div>	<div>DOOR TYPE</div> <div>D9</div> <div>SWINGS DOOR INFRACA FLIP/FLAP DOOR TWO LEAVES</div>
<div>LOCATION</div> <div>REFUSE ROOM/INBETWEEN WALK IN COOLER AND WALK IN FRIDGE</div>	<div>LOCATION</div> <div>HOT KITCHEN/COLD KITCHEN</div>	<div>LOCATION</div> <div>SERVICE HALLWAY</div>
<div>SIZE</div> <div>1080 X 2210</div>	<div>SIZE</div> <div>1900 X 2100</div>	<div>SIZE</div> <div>2100 X 2300</div>
<div>HINGES</div> <div>STAINLESS STEEL HINGES</div>	<div>HINGES</div> <div>STAINLESS STEEL HINGES</div>	<div>HINGES</div> <div>STAINLESS STEEL HINGES</div>
<div>COUNTS</div> <div>2</div>	<div>COUNTS</div> <div>2</div>	<div>COUNTS</div> <div>1</div>
		
<div>fl. lev.</div>		
<div>DOOR TYPE</div> <div>D10</div> <div>SINGLE FLUSH DOOR</div>	<div>DOOR TYPE</div> <div>D11</div> <div>ALUPROF MB-86-N-SI PANEL DOOR</div>	<div>DOOR TYPE</div> <div>D12</div> <div></div>
<div>LOCATION</div> <div>GRAND TOILET</div>	<div>LOCATION</div> <div>PRIVATE DINING 1/PRIVATE DINING 2/PRIVATE DINING 3</div>	
<div>DOOR SIZE</div> <div>1067 X 2210</div>	<div>DOOR SIZE</div> <div>1515 X 2205</div>	
<div>HINGES</div> <div>STAINLESS STEEL HINGES</div>	<div>HINGES</div> <div>STAINLESS STEEL HINGES</div>	
<div>COUNTS</div> <div>1</div>	<div>COUNTS</div> <div>3</div>	

8.4 WINDOW SCHEDULE

															
60 CURTAIN WALL (GLASS)				60 CURTAIN WALL (GLASS)				60 CURTAIN WALL (GLASS)				60 CURTAIN WALL (GLASS)			
PRIVATE DINING 2				CONNECTING HALLWAY (FACING SOUTH)				DINING AREA				FRONT RECEPTION			
5480 X 3465 X 5813				3166 X 3120 X 4900				3000 X 8860				3700 X 3633 X 3034 X 2824			
1				1				1				1			
															
60 CURTAIN WALL (GLASS)				60 CURTAIN WALL (GLASS)				60 CURTAIN WALL (GLASS)				60 CURTAIN WALL (GLASS)			
DINING AREA				DINING AREA				RECEPTION (RIGHT)				DINING AREA			
3200 X 4900				3600 X 7300				3663 X 1500				3308 X 5326			
1				1				1				1			

															
60 CURTAIN WALL (GLASS)				60 CURTAIN WALL (GLASS)				60 CURTAIN WALL (GLASS)				60 CURTAIN WALL (GLASS)			
DINING AREA				DINING AREA				DINING AREA				MEZZANINE			
3330 X 4975				2400 X 1900				3008 X 13000				2700 X 13000			
1				1				1				1			
															
60 CURTAIN WALL (GLASS)				60 CURTAIN WALL (GLASS)				60 CURTAIN WALL (GLASS)				60 CURTAIN WALL (GLASS)			
DINING AREA				CONNECTING HALLWAY (FACING NORTH)				RECEPTION (LEFT)				PRIVATE DINING 3			
2700 X 2600				3213 X 5075				3663 X 1800				3213 X 5075			
1				1				1				1			


											
60 WINDOW AWNING MARVIN CRANK OUT MODERN (OPERABLE)				60 WINDOW AWNING PELLA 250 SERIES VENT NAIL BLOCK				60 WINDOW AWNING PELLA 250 SERIES VENT NAIL BLOCK			
REFUSE ROOM				GRAND TOILET 2/DISABLED RESTROOM				MALE/FEMALE/OUTDOOR M/OUTDOOR F RESTROOM			
881 X 981				550 X 1400				550 X 950			
STAINLESS STEEL				STAINLESS STEEL				STAINLESS STEEL			
1				2				4			


9.0 REQUEST FOR INFORMATION

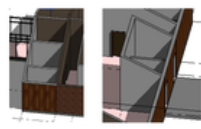
RFI #1

REQUEST FOR INFORMATION (RFI)	
RFI No: RFI/QS/002	SUBMITTED TO: FAHMI GROUP 3
DATE: 17/5/2025	
NEEDED BY: 19/5/2025	SUBMITTED BY: QS GROUP 1-Lee Jia Wen
PROJECT: Truffle Restaurant	
PROJECT No: Refer to archi (if applicable)	
RFI DESCRIPTION	REQUEST
Relevant Drawings We are requesting for the relevant information required for the cost estimation of the Truffle Restaurant Project.	We kindly request that all relevant information available be shared with us by the 19th of May, 2025
ATTACHMENTS:-	
SUBMITTED BY: QS GROUP 1-Lee Jia Wen	
RESPONSE TO RFI	
The following are link attached is for the google drive containing the relevant drawings for our project. AAC Truffles Restaurant Drawings	
RESPONSE BY: AAC FahmiGroup3- William Limmanjaya	
DATE: 23/5/2025	

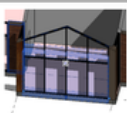
RFI #2

REQUEST FOR INFORMATION (RFI)	
RFI No: RFI/QS/002	SUBMITTED TO: FAHMI GROUP 3
DATE: 18/5/2025	
NEEDED BY: 23/5/2025	SUBMITTED BY: QS GROUP 1-Lee Jia Wen
PROJECT: Truffle Restaurant	
PROJECT No: Refer to archi (if applicable)	
RFI DESCRIPTION	RECOMMENDATION
Cost (Alternative Design) 1. We seek confirmation on the possibility of revising the current staircase design from spiral stairs to straight stairs based on the following concerns: <ul style="list-style-type: none">Higher installation complexity and cost based on past similar projects: Spiral staircases involve custom curved treads, risers, and railings, which are more challenging and costly to fabricate and install compared to straight stairs.Limited local availability: Custom spiral components are less commonly available in the Malaysian market and may lead to longer lead times or higher procurement costs.	We kindly recommend: 1. Consider revising the current staircase design to a straight staircase, which allows simpler construction, better cost control, and easier local sourcing. 2. Please confirm if the architectural team is open to this design revision, or if the spiral staircase serves a specific design or functional purpose.
ATTACHMENTS:	
	
SUBMITTED BY: QS GROUP 1-Lee Jia Wen	
RESPONSE TO RFI	
The spiral staircase is important for our design and can not be changed to a straight staircase.	
RESPONSE BY: AAC FahmiGroup3- William Limmanjaya	
DATE: 23/5/2025	


REQUEST FOR INFORMATION (RFI)	
RFI No: RFI/QS/003	SUBMITTED TO: FAHMI GROUP 3
DATE: 18/5/2025	
NEEDED BY: 23/5/2025	SUBMITTED BY: QS GROUP 1-Lee Jia Wen
PROJECT: Truffle Restaurant	
PROJECT No: Refer to archi (if applicable)	
RFI DESCRIPTION	RECOMMENDATION
<ul style="list-style-type: none">We seek confirmation regarding the adequacy of fire safety provisions for the restaurant area in terms of means of escape and fire compartmentation.	<ul style="list-style-type: none">For restaurant spaces with extensive floor areas, additional exits may be required to ensure that occupants can reach an exit within an acceptable travel distance.Any direct access or connection between the kitchen and public dining areas should be enclosed with fire-resistant construction, including walls and fire-rated doors.
ATTACHMENTS:	
	
SUBMITTED BY: QS GROUP 1-Lee Jia Wen	
RESPONSE TO RFI	
We have revised the plan to include fire-rated doors and an additional exit, however since we have not learnt about fire-safety regulations, we suggest that the QS team can move forward and assume the most relevant fire-resistant construction to be used for the project.	
RESPONSE BY: AAC FahmiGroup3- William Limmanjaya	
DATE: 23/5/2025	

REQUEST FOR INFORMATION (RFI)	
RFI No: RFI/QS/004	SUBMITTED TO: FAHMI GROUP 3
DATE: 18/5/2025	
NEEDED BY: 23/5/2025	SUBMITTED BY: QS GROUP 1-Lee Jia Wen
PROJECT: Truffle Restaurant	
PROJECT No: Refer to archi (if applicable)	
RFI DESCRIPTION	RECOMMENDATION
Upon reviewing the architectural submission for the TRUFFLES restaurant project—including the Revit model and window schedule—we observe the following: <ul style="list-style-type: none">The window schedule comprises only fixed curtain wall systems, with no operable window panels indicated.The Revit model does not show any operable window units in any habitable or service spaces.	Kindly revise the revit model and window schedule to include operable windows in: <ul style="list-style-type: none">All habitable rooms (dining, offices)All service areas (toilets, kitchens, stores), unless mechanical systems are detailed
ATTACHMENTS:	
	
SUBMITTED BY: QS GROUP 1-Lee Jia Wen	
RESPONSE TO RFI	
Operable windows have been added to relevant spaces of the project. Window schedule and revit model have been updated.	
RESPONSE BY: AAC FahmiGroup3- William Limmanjaya	
DATE: 23/5/2025	

REQUEST FOR INFORMATION (RFI)	
RFI No: RFI/QS/006	SUBMITTED TO: FAHMI GROUP 3
DATE: 18/5/2025	
NEEDED BY: 23/5/2025	SUBMITTED BY: QS GROUP 1-Lee Jia Wen
PROJECT: Truffle Restaurant	
PROJECT No: Refer to archi (if applicable)	
RFI DESCRIPTION	RECOMMENDATION
Missing Information <ul style="list-style-type: none">Upon reviewing the current architectural drawing package for the TRUFFLES AAC project, we found that detailed information related to external works and external furniture & fittings is not provided. Roof Plan and Roof Construction Details <ul style="list-style-type: none">We have reviewed the current architectural submission for the TRUFFLES AAC project and would like to request clarification regarding the roof plan and associated construction details.	We kindly recommend the following: <ul style="list-style-type: none">As the landscape and outdoor dining areas are visible in the Revit model, we request that the corresponding PSD/CAD drawings be issued to reflect these areas in detail.Please include layout and specifications for external works (landscape drawings) and external furniture and fittings (e.g., outdoor tables, chairs, bins, bollards). <ul style="list-style-type: none">To provide the roof plan drawing showing the layout and design intent.To include any basic roof construction details, such as layers or key materials used.If still in progress, please let us know when the drawings are expected to be shared.
ATTACHMENTS: No attachments	
SUBMITTED BY: QS GROUP 1-Lee Jia Wen	
RESPONSE TO RFI	
Information regarding external works, furniture and fittings have been provided. Roof plan drawing have been provided.	
RESPONSE BY: AAC FahmiGroup3- William Limmanjaya	
DATE: 23/5/2025	

REQUEST FOR INFORMATION (RFI)	
RFI No: RFI/QS/007	SUBMITTED TO: FAHMI GROUP 3
DATE: 18/5/2025	
NEEDED BY: 23/5/2025	SUBMITTED BY: QS GROUP 1-Lee Jia Wen
PROJECT: Truffle Restaurant	
PROJECT No: Refer to archi (if applicable)	
RFI DESCRIPTION	RECOMMENDATION
Clarification on Entrance Door Opening at Reception Area (Curtain Wall System) <ul style="list-style-type: none">We have reviewed the 3D model for the TRUFFLES AAC project and observed that the receptionist area front elevation is shown as a full-height curtain wall.Currently, there is no clear indication of an operable door panel or operable entrance in this area.	We kindly request: <ul style="list-style-type: none">Please confirm whether an operable door is integrated into the curtain wall system at the receptionist area.
ATTACHMENTS:	
	
SUBMITTED BY: QS GROUP 1-Lee Jia Wen	
RESPONSE TO RFI	
Operable doors on curtain walls have been added. Relevant schedules, drawings and models have been updated.	
RESPONSE BY: AAC FahmiGroup3- William Limmanjaya	
DATE: 23/5/2025	

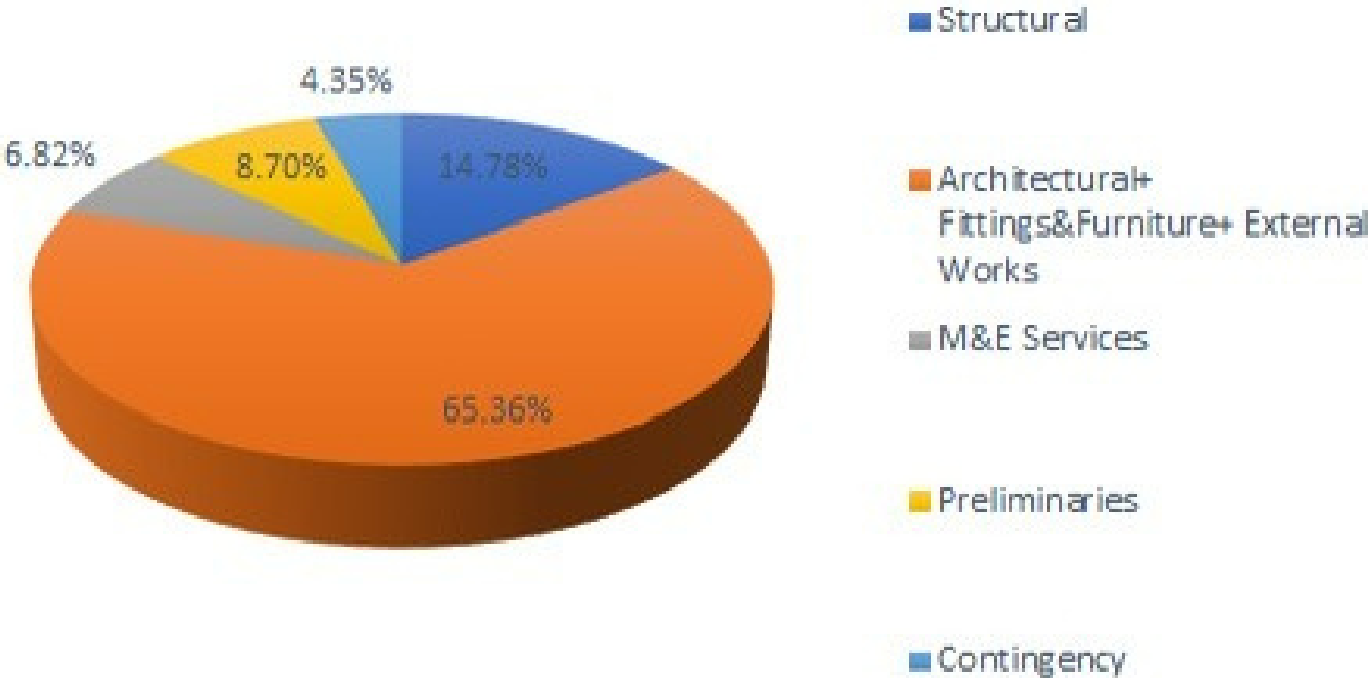
RFI #3

REQUEST FOR INFORMATION (RFI)	
RFI No: RFI/AAC/001	SUBMITTED TO: QS GROUP 1-Lee Jia Wen
DATE: 27/5/2025	
NEEDED BY: 29/5/2025	SUBMITTED BY: FAHMI GROUP 3
PROJECT: Truffle Restaurant	
PROJECT No: Refer to archi (if applicable)	
RFI DESCRIPTION	REQUEST
Cost Estimation We kindly request for the information regarding the cost estimation for the Truffles Restaurant Project	We kindly request that this information be shared with us by the 29th of May, 2025
ATTACHMENTS:-	
SUBMITTED BY: FAHMI GROUP 3	
RESPONSE TO RFI	
We have attached the information on the cost estimation for the Truffle Restaurant in the link below: Cost Estimation Info	
Attachment:	
	
RESPONSE BY: QS GROUP 1-Lee Jia Wen	
DATE: 29/5/2025	

10.0 COST ESTIMATION

COST ESTIMATION					
PROJECT NAME: Fahmi G3			1245 m2		
ITEM	COMPONENTS	COST / AREA (RM)	AMOUNT (RM)	PERCENTAGE OF TOTAL COST (%)	REMARKS
1	Structural	RM1,355.81	RM1,687,988.24	14.78%	
2	Architectural+ Fittings&Furniture+ External Works	RM5,997.51	RM7,466,895.91	65.36%	
3	M&E Services	RM625.46	RM778,702.00	6.82%	
4	Preliminaries	RM797.88	RM993,358.62	8.70%	
5	Contingency	RM398.94	RM496,679.31	4.35%	
Total Estimated Construction Cost =		RM9,175.60	RM11,423,624.07	100.00%	

Cost Estimate Breakdown



11.1 TEAM MEMBERS SUMMARY & REFLECTIONS

SUMMARY

This report presents a collaborative design project involving architecture and quantity surveying students in the development of a 2,500 m² dine-in restaurant located in Putrajaya. The assignment simulates a real-world interdisciplinary workflow, focusing on schematic design, constructability, and documentation. The project is divided into four main tasks: generating AI-assisted design prompts, translating conceptual outputs into practical spatial layouts, exploring construction methods and material applications, and preparing architectural information for cost estimation and budgeting. Emphasis is placed on integrating AI tools with design intent, evaluating feasibility, and fostering effective collaboration. The project enhances students' understanding of early-stage design development, interdisciplinary communication, and the practical considerations required in architectural practice.

REFLECTIONS

BELLY WONG - Through handling the visual representation of our design, I learned how to clearly and effectively communicate complex architectural ideas. Producing the presentation boards pushed me to improve both my graphic layout and rendering abilities, which were crucial in conveying constructability. The project also made me more mindful of client perspectives, ensuring the restaurant design was not only functional but also appealing and marketable. Collaborating with the team taught me the importance of visual clarity in interdisciplinary work and helped me manage deadlines and expectations across different parts of the project.

KIMIKO YONG YI XUAN - My focus on sustainable strategies during the project helped me explore how low-impact materials and passive design could be realistically integrated into a restaurant. I learned that sustainability was about making informed choices that balance environmental responsibility with cost and constructability, something that became evident through feedback from QS students. This experience deepened my critical thinking and helped me articulate sustainable concepts within a practical architectural narrative. I also grew more confident in advocating for innovation while understanding the importance of compromise and realism in design.

WILLIAM LIMMANJAYA - Leading this restaurant design project was a very fun experience. It challenged me to coordinate our group's vision while staying grounded in practical constructability. Balancing architectural creativity with construction, I learned to communicate effectively with Quantity Surveying students, to ensure our design met both aesthetic and cost constraints. Managing the timeline and team dynamics sharpened my leadership and problem-solving skills. Most importantly, I learned the value of inclusive decision-making, where every team member's perspective contributed to a more robust and well-rounded design proposal.

NICOLAUS PUTRA TANJAYA - participating in this project allowed me to refine my understanding of architectural detailing and develop design strategies that were not just visually compelling but constructible. Material choices and their implications on cost and buildability became much clearer through collaboration with QS students, prompting me to adapt my design based on feedback. I also deepened my technical drawing and BIM modeling skills while learning to document designs for real-world clarity. This experience emphasized the importance of team communication and adaptability, especially when iterating on ideas under tight deadlines.

CHEE KUAN YUNG - My role in focusing on structural integration and services coordination offered invaluable insight into the technical backbone of architectural design. Understanding how structural systems interact with spatial design helped me approach architecture with more realism. I was particularly challenged to ensure feasibility in large open dining spaces. Collaborating with QS students made me more sensitive to how technical decisions impact cost and constructability. I came away from this project with a greater appreciation for multidisciplinary coordination and the practical side of architecture.

11.2 REFERENCES

Ching, F. D. K. (2015). *Architecture: Form, Space, and Order* (4th ed.). Wiley.

Buxton, P. (Ed.). (2021). *Metric handbook: Planning and design data* (6th ed.). Routledge.

Bizley, G. (2008). *Architecture in detail*. Elsevier/Architectural Press.

Ernst Neufert, Neufert, P., Johannes Kister, Sturge, D., & Luhman, N. J. (2019). *Architects' data*. John Wiley & Sons, Ltd ; Hoboken, Nj.

Ching, F. D. K. (2014). *Building construction illustrated* (5th ed.). Wiley.