

[ARC 60104]
ADVANCED ARCHITECTURAL CONSTRUCTION
PROJECT 1 – MULTIDISCIPLINARY COLLABORATIVE PROJECT

TRUFFLES · GASTRONOMY HAVEN

 PUTRAJAYA, MALAYSIA

Truffles The epitome of indulgent elegance, Truffles is a celebration of rarity, richness, and refined taste. Each creation pays homage to the world's most treasured ingredients, presented with opulence and grace. With an atmosphere as luxurious as its name suggests, Truffles invites guests to Savor decadence with every bite—a true temple of gourmet splendour.



GROUP 3 Tutor: Ts. Ahmad Fahmi Zainazlan

Belly Wong	0356764
Kimiko Yong Yi Xuan	0359628
William Limmanjaya	0364193
Nicolaus Putra Tanjaya	0360735
Chee Kuan Yung	0356997

AI IMAGES



AI PROMPTS

Design a fine dining restaurant named Truffles, located in Putrajaya with a sprawling 2500m² footprint. The architecture is primarily single-story, enhanced by **elegant 'pop-out'** features that hint at a subtle second-story elevation — adding a layer of exclusivity and visual richness.

The exterior should radiate indulgent elegance, with rich materials like dark stone, brushed metals, and warm ambient lighting. The design should feel rare, refined, and quietly grand — a **modern palace of taste**.

For the interior, envision a celebration of **gourmet luxury**. Think plush velvet seating, dramatic lighting, polished marble surfaces, and golden accents. The color palette should include deep tones like obsidian, truffle brown, and antique gold.

Every element — from the curated art to the glassware — should pay homage to the world's most treasured ingredients and culinary traditions. The space should evoke richness, grace, and a sense of sacred indulgence — a true temple of fine dining where every detail whispers opulence."



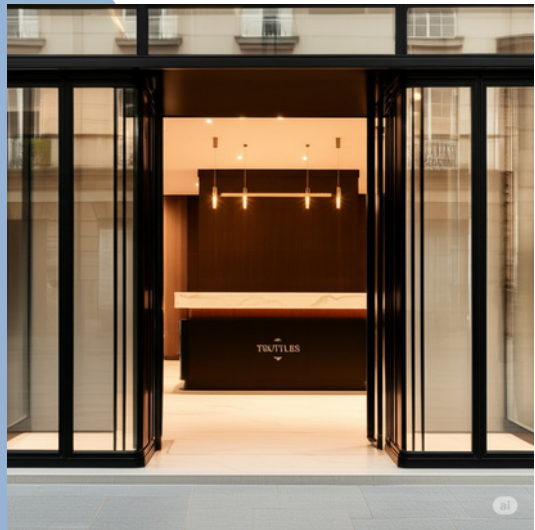
CONCEPT AND NARRATIVES



Nestled amidst the tranquil greenery of Putrajaya, Truffles offers a unique visual experience even before you step inside. The restaurant sits on a secluded plot, embraced by the gentle sway of mature trees that line its perimeter. From its vantage point, you catch glimpses of the well-maintained roads that define Putrajaya's structured landscape, yet they remain a distant hum, never intruding on the serene atmosphere. It's a harmonious blend of nature's calm and the refined elegance promised by the restaurant within.



Approaching Truffles for drop-off, you'll find a discreet and elegantly designed area just beside the restaurant. Mature trees provide a verdant backdrop, filtering the light and enhancing the sense of calm. The drop-off point offers easy access to the restaurant's entrance, with subtle lighting illuminating the pathway. It's a seamless transition from the surrounding natural beauty to the refined atmosphere of Truffles.



Upon entering Truffles, you are immediately greeted by a sense of understated elegance. Directly ahead, a modestly sized reception counter stands as a central focal point. The wall behind it is clad in rich, dark timber, providing a sophisticated and warm backdrop. To either side of this reception area, open-framed doorways offer enticing glimpses into the warmly lit dining spaces, inviting you further into the culinary heart of Truffles.



The black steel spiral staircase at Truffles is a striking feature, leading to a mezzanine dining area. Its clever placement frames expansive windows, seamlessly connecting the modern interior with the outdoors, all bathed in warm light.



Truffles offers a refined private dining space for 8-10 guests. Beige walls complement a striking vertical clad accent wall with an integrated table cabinet. Warm lighting illuminates a long wooden table, while a single expansive glass curtain wall offers a landscape view of Subang Jaya. The room features wood veneer flooring and the added convenience of a private powder room.



The ideal perspective of Truffles, your eye is drawn to the sleek, modern lines of its architecture, softened by the pitched roof and extensive glass panels that mirror the vibrant greenery of Subang Jaya. The outdoor dining area, dotted with inviting umbrellas and seating, beckons you to an al fresco experience. As daylight fades, a warm glow emanates from within, casting a sophisticated light on the lush surroundings and truly blending the restaurant with its natural Malaysian setting.



Stepping through the open-framed doorway, the dining area of Truffles unfolds, a seamless extension of the reception's understated elegance. Wooden tables and seats are thoughtfully arranged across the large porcelain tiled floor, bathed in warm lighting that highlights the serene beige-painted walls. Towards one end, a jazz stage promises lively evenings, complemented by a well-appointed bar ready to serve.



“Nestled amidst the tranquil greenery of Putrajaya, Truffles offers a unique visual experience even before you step inside. The restaurant sits on a secluded plot, embraced by the **gentle sway of mature trees** that line its perimeter. From its vantage point, you catch glimpses of the well-maintained roads that define Putrajaya's structured landscape, yet they remain a **distant hum**, never intruding on the serene atmosphere. It's a harmonious blend of nature's calm and the refined elegance promised by the restaurant within.”



“Approaching Truffles for drop-off, you'll find a discreet and elegantly designed area just beside the restaurant. Mature trees provide a verdant backdrop, **filtering the light** and **enhancing the sense of calm**. The drop-off point offers easy access to the restaurant's entrance, with subtle lighting illuminating the pathway. It's a seamless transition from the surrounding natural beauty to the refined atmosphere of Truffles”.



“Upon entering Truffles, you are immediately greeted by a sense of **understated elegance**. Directly ahead, a modestly sized reception counter stands as a central focal point. The wall behind it is clad in rich, dark timber, providing a sophisticated and warm backdrop. To either side of this reception area, open-framed doorways offer enticing glimpses into the **warmly lit dining spaces**, inviting you further into the culinary heart of Truffles.”



“Stepping through the open-framed doorway, the dining area of Truffles unfolds, a seamless extension of the reception's understated elegance. Wooden tables and seats are thoughtfully arranged across the large porcelain tiled floor, bathed in warm lighting that highlights the serene beige-painted walls. Towards one end, a **jazz stage promises lively evenings**, complemented by a well-appointed bar ready to serve”.



“The black steel spiral staircase at Truffles is a striking feature, leading to a mezzanine dining area. Its clever placement frames expansive windows, seamlessly connecting the modern interior with the outdoors, **all bathed in warm light.**”

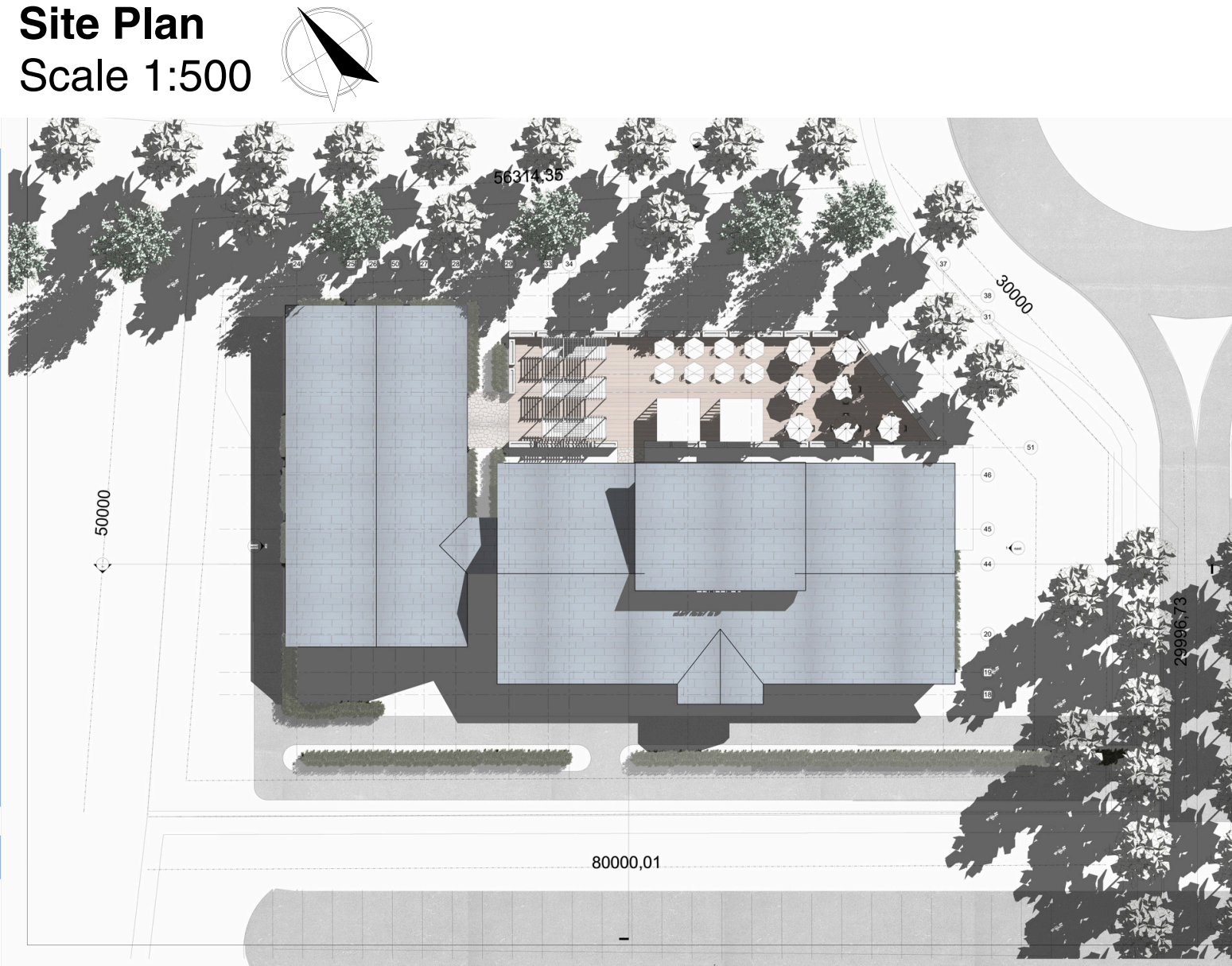


“Truffles offers a refined private dining space for 8-10 guests. Beige walls complement a striking vertical cladded accent wall with an integrated table cabinet. Warm lighting illuminates a long wooden table, while a single expansive glass curtain wall offers a landscape view of Subang Jaya. The room features wood veneer flooring and the **added convenience of a private powder room.**”



“The ideal perspective of Truffles, your eye is drawn to the sleek, modern lines of its architecture, softened by the pitched roof and extensive glass panels that mirror the vibrant greenery of Subang Jaya. The outdoor dining area, dotted with inviting umbrellas and seating, beckons you to an al fresco experience. As daylight fades, a **warm glow emanates from within**, casting a sophisticated light on the lush surroundings and truly blending the restaurant with its natural Malaysian setting.”

Site Plan
Scale 1:500

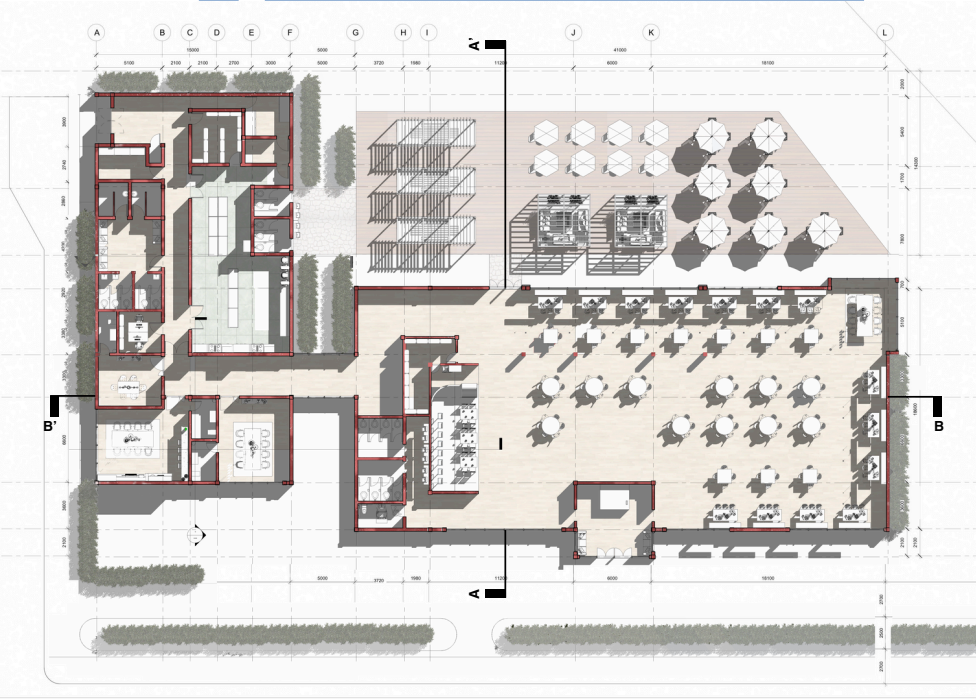


Schedules and Materials

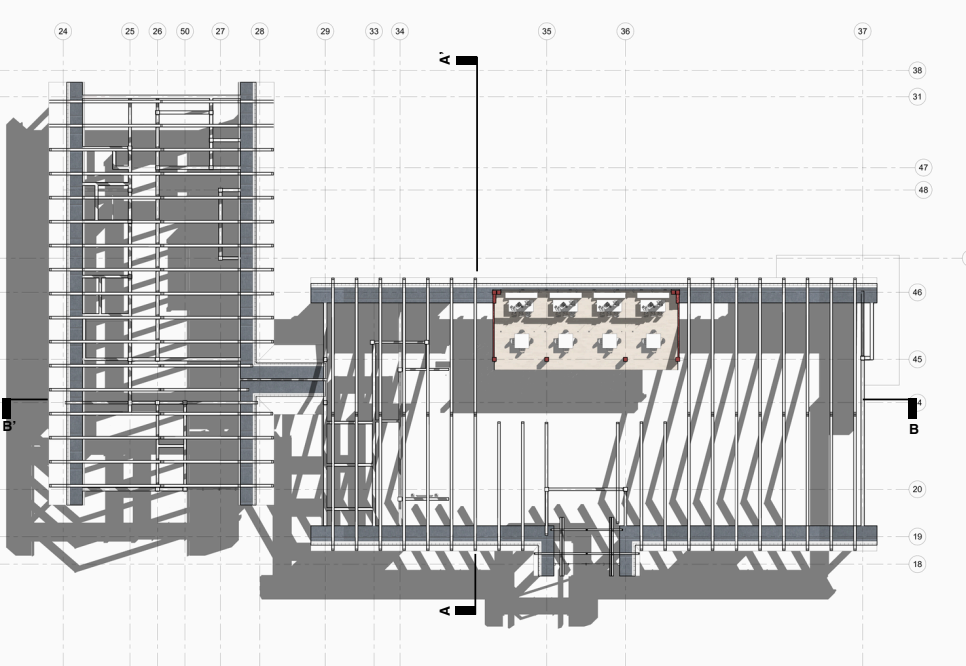
BLOCK	ROOM / AREA	FLOOR	SKIRTING	WALL
FRONT OF HOUSE	Reception Area	- 600 x 600 mm Polished porcelain tiles	- 300 x 100mm ht. ceramic tile	-10mm. thk, 600 x 2400mm Coated timber veneer panels
	Dining Area	- 600 x 600 mm Polished porcelain tiles	- 300 x 100mm ht. ceramic tile	-4mm. thk. Skim Coat and Emulsion Paint, 10mm. thk, 600 x 2400mm Coated timber veneer panels
	Front Storage Area	- 4mm. thk,1220 x 180mm Vinyl Planks	-	-4mm. thk. Skim Coat and Emulsion Paint
	Bar	- 600 x 600 mm Polished porcelain tiles	-	-4mm. thk. Skim Coat and Emulsion Paint
	Mezzanine	- 120 x 1800mm Coated Timber Planks	-	-4mm. thk. Skim Coat and Emulsion Paint

BLOCK	ROOM / AREA	FLOOR	WALL
BACK OF HOUSE	Walk-in Fridge	- 600 x 600mm Non-slip ceramic tiles with water proofing	-1mm. thk. Stainless steel panels
	Walk-in Cooler	- 600 x 600mm Non-slip ceramic tiles with water proofing	-1mm. thk. Stainless steel panels
	Cold Kitchen	- 600 x 600mm Non-slip ceramic tiles with water proofing	- 600 x 1200mm Glazed ceramic tiles
	Hot Kitchen	- 600 x 600mm Non-slip ceramic tiles with water proofing	- 600 x 1200mm Glazed ceramic tiles
	Back Storage Area	- 600 x 600mm Non-slip ceramic tiles with water proofing	- 600 x 1200mm Glazed ceramic tiles
	Staff Room	- 4mm. thk,1220 x 180mm Vinyl Planks	- 4mm. thk. Skim Coat and Emulsion Paint
	Management Office	- 4mm. thk,1220 x 180mm Vinyl Planks	- 4mm. thk. Skim Coat and Emulsion Paint
	Service Hallway	- 600 x 600mm Non-slip ceramic tiles with water proofing	- Plaster & Paint finished
	M&E Room	- Cement Render	- Plaster & Paint finished

Ground Floor Plan
Scale 1:500

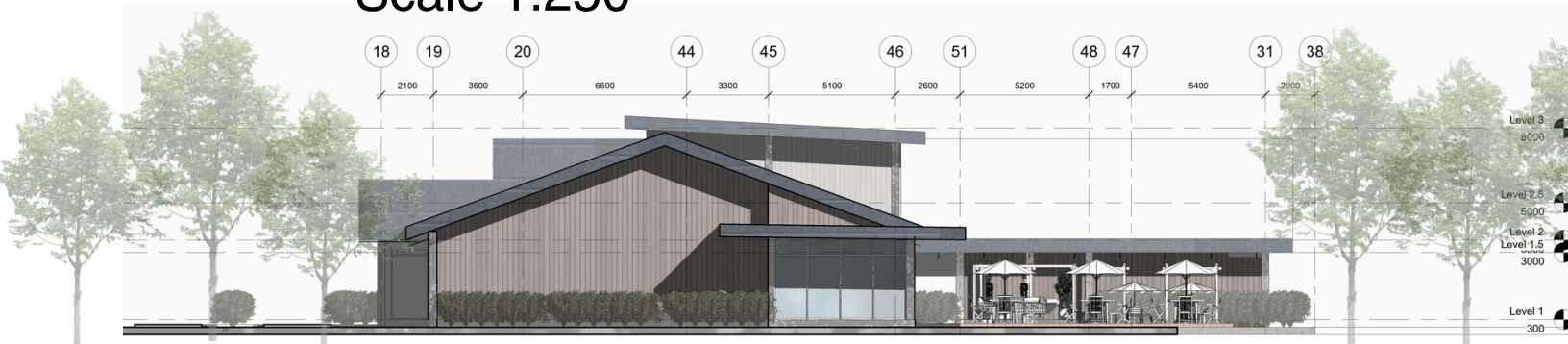


Mezzanine Floor Plan
Scale 1:500



GFA: 1250m²

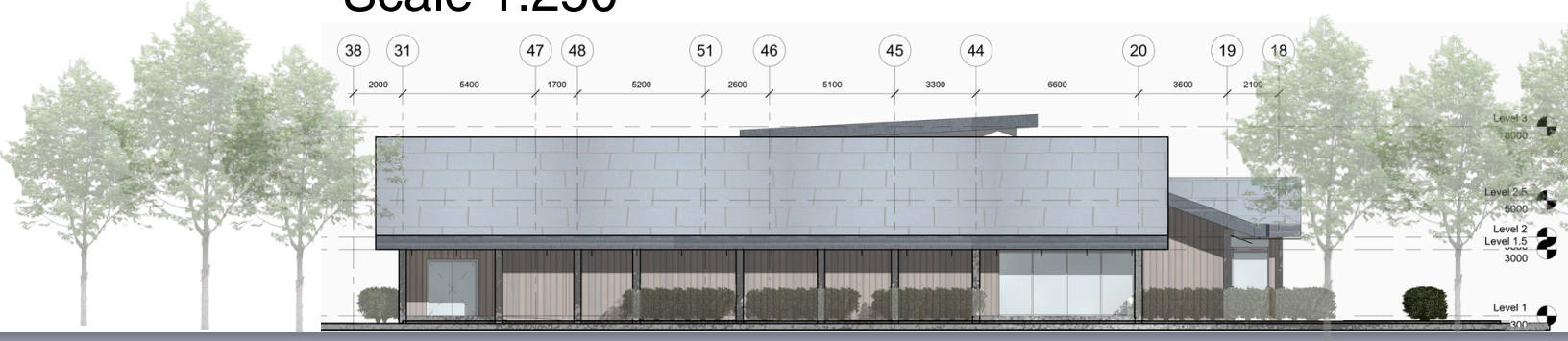
East Elevation
Scale 1:250



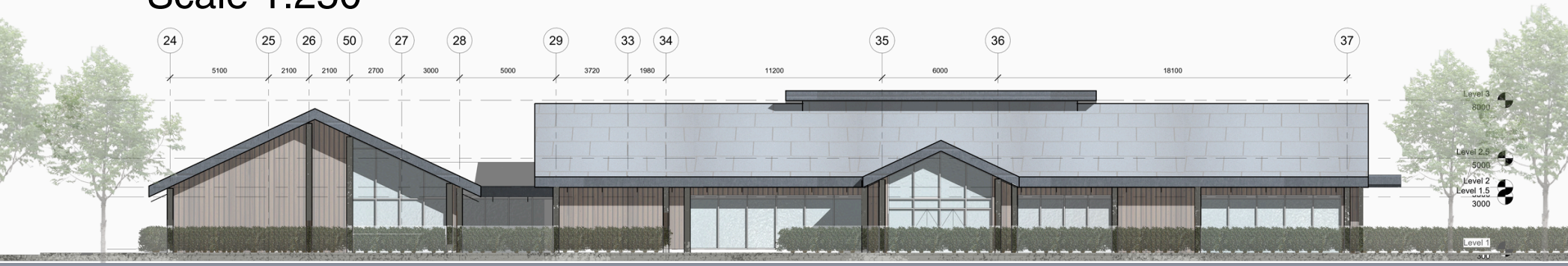
North Elevation
Scale 1:250



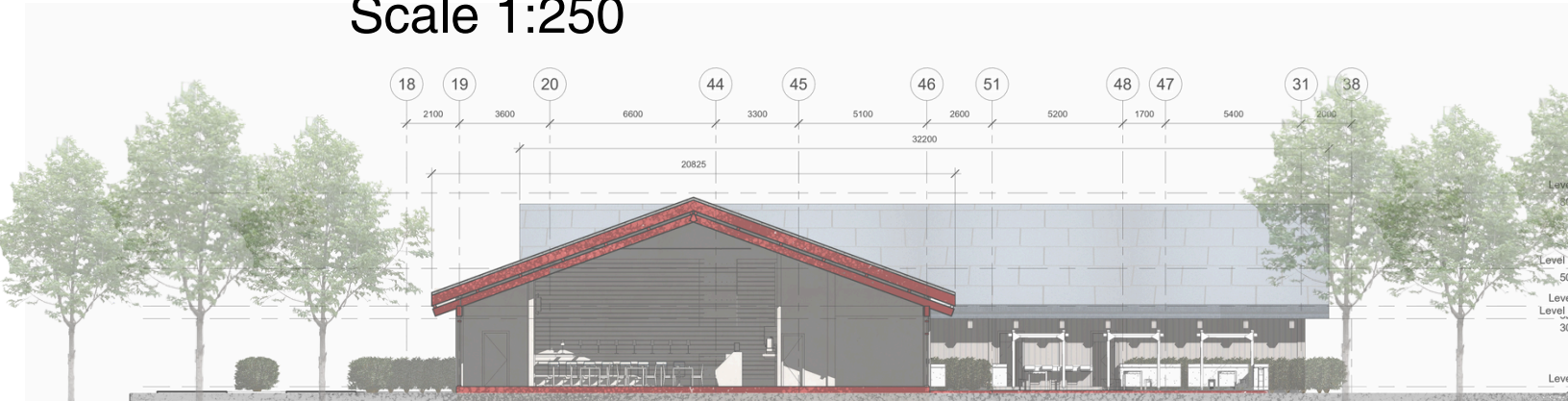
West Elevation
Scale 1:250



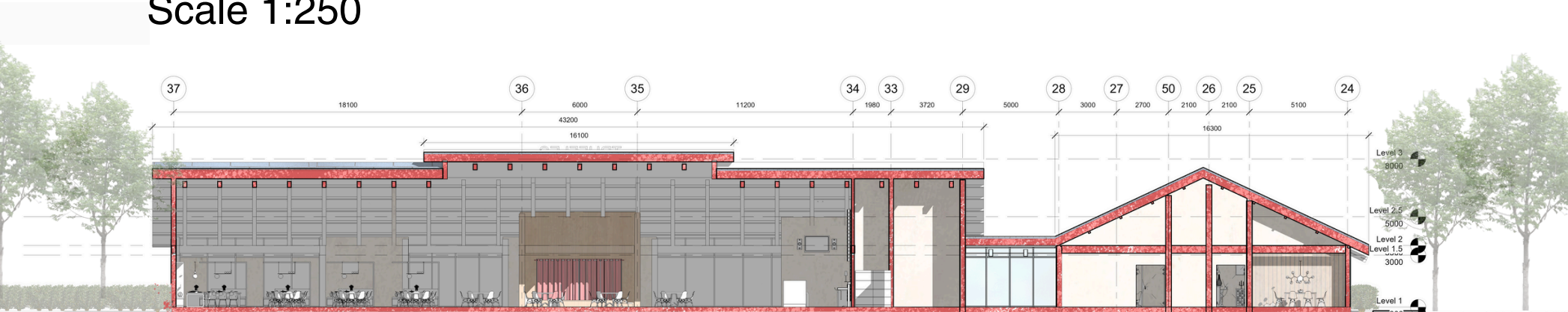
South Elevation
Scale 1:250



Section A-A'
Scale 1:250



Section B-B'
Scale 1:250



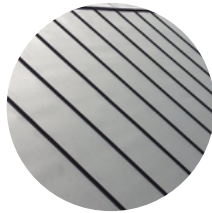
MATERIALITY



Coated timber veneer panels



Skim Coat and Emulsion Paint



Zinc roof



Timber truss



Steel bar truss



Polished porcelain tiles



Vinyl Plank



Vinyl Plank



FLOOR TO CEILING DETAIL

Corrugated Zinc Roofing Sheets
2400mm x 900mm

Square Hollow Sections
50mm x 50mm

Gypsum Boards
2400mm x 1200mm

Rock Wool Insulation

Rectangular Hollow Sections
50mm x 100mm

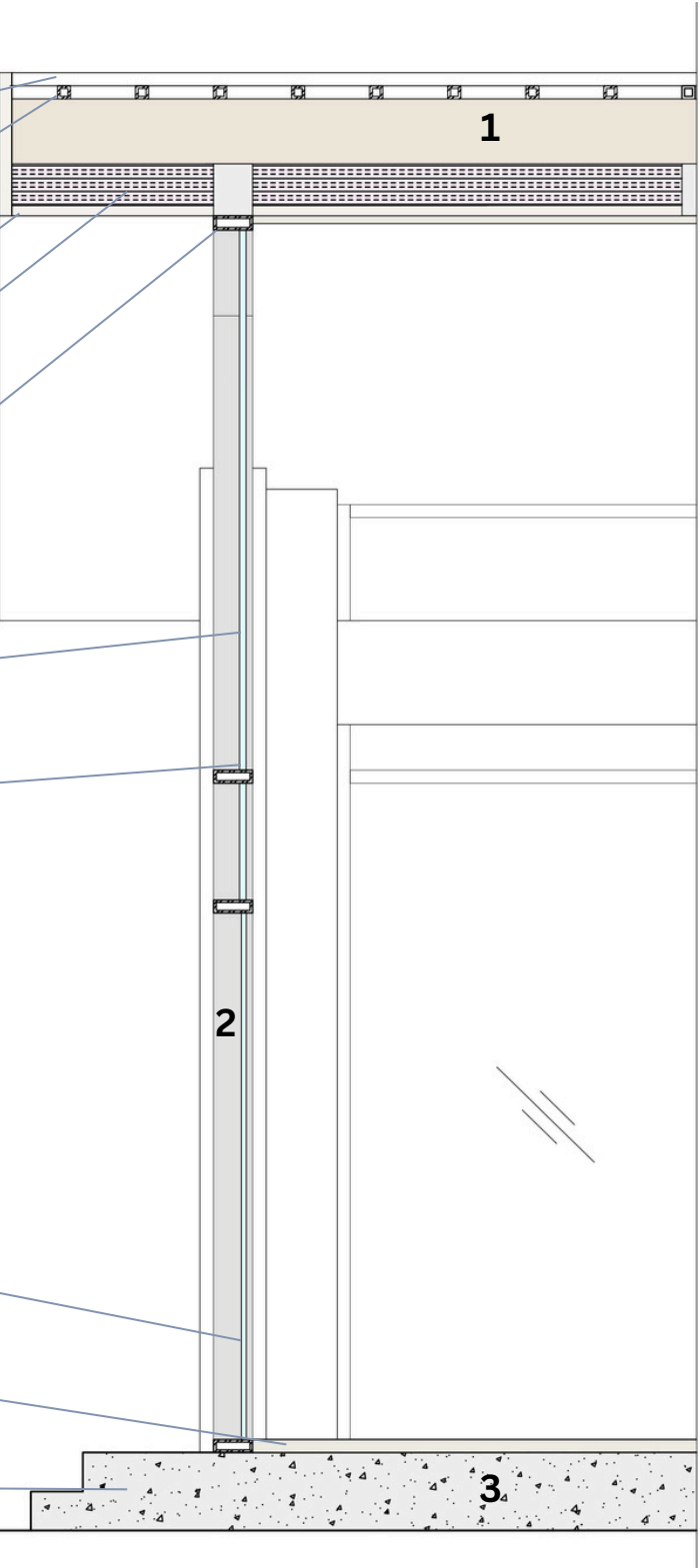
Low-e Tempered Glass
Custom fit to frame

Aluminium Window Frame
30mm x 20mm

Double Glass Door
1800mm x 2100mm

Porcelain Flooring Tiles
600mm x 600mm

RC Floor Slab
300mm thick

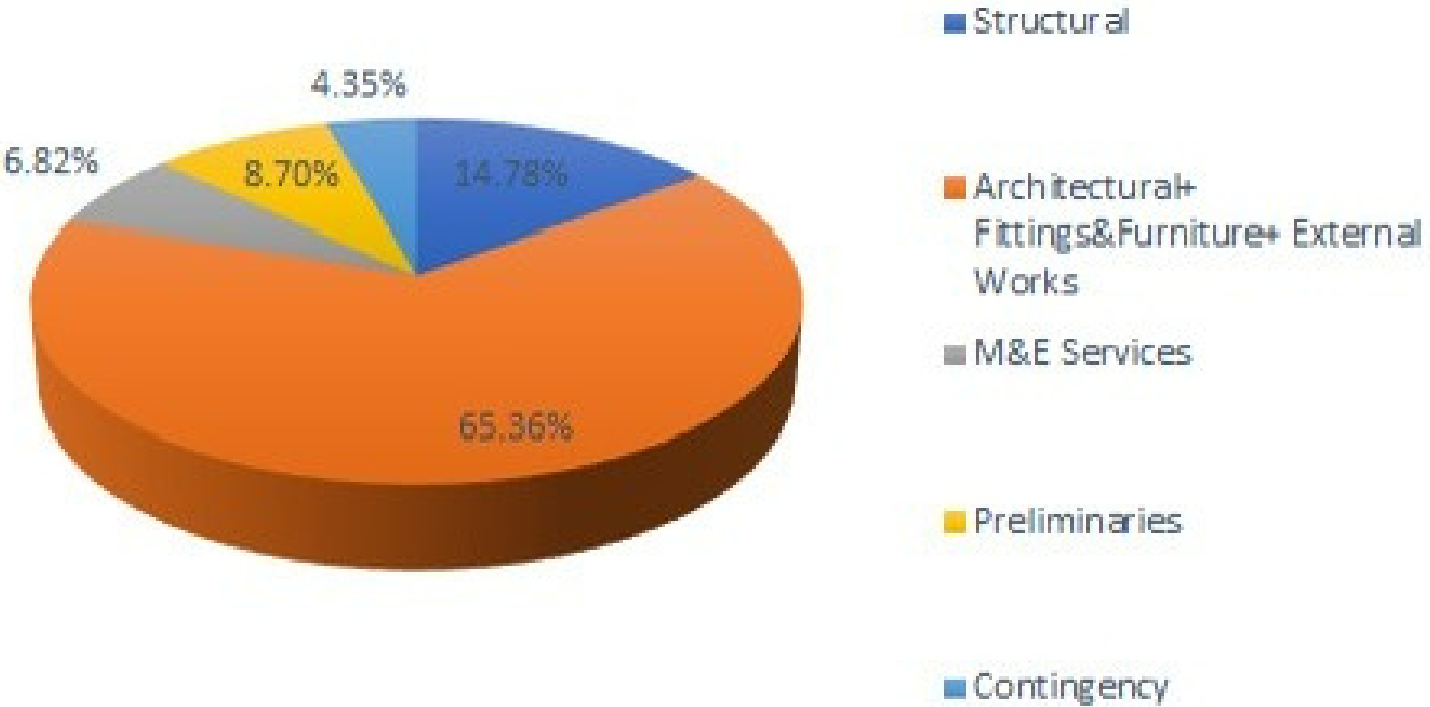


- 1. Roof System
- 2. Curtain Wall
- 3. Floor System

COST ESTIMATION

COST ESTIMATION					
PROJECT NAME: Fahmi G3			1245 m2		
ITEM	COMPONENTS	COST / AREA (RM)	AMOUNT (RM)	PERCENTAGE OF TOTAL COST (%)	REMARKS
1	Structural	RM1,355.81	RM1,687,988.24	14.78%	
2	Architectural+ Fittings&Furniture+ External Works	RM5,997.51	RM7,466,895.91	65.36%	
3	M&E Services	RM625.46	RM778,702.00	6.82%	
4	Preliminaries	RM797.88	RM993,358.62	8.70%	
5	Contingency	RM398.94	RM496,679.31	4.35%	
	Total Estimated Construction Cost =	RM9,175.60	RM11,423,624.07	100.00%	

Cost Estimate Breakdown





THANK YOU